

For Research Use Only

CoraLite®594-conjugated GPR37/Pael-R Polyclonal antibody



Catalog Number: CL594-14820

Featured Product

Basic Information

| | | |
|---|---|---|
| Catalog Number: CL594-14820 | GenBank Accession Number: BC040007 | Purification Method: Antigen affinity purification |
| Size: 100ul , Concentration: 1000 µg/ml by Nanodrop; | GeneID (NCBI): 2861 | Recommended Dilutions: IF 1:50-1:500 |
| Source: Rabbit | Full Name: G protein-coupled receptor 37 (endothelin receptor type B-like) | Excitation/Emission maxima wavelengths: 593 nm / 614 nm |
| Isotype: IgG | Calculated MW: 67 kDa | |
| Immunogen Catalog Number: AG6591 | Observed MW: 50-55 kDa | |

Applications

| | |
|--|---|
| Tested Applications: IF | Positive Controls: IF : mouse brain tissue, |
| Species Specificity: human, mouse, rat | |

Background Information

The orphan G protein-coupled receptor GPR37, also known as PAELR (parkin-associated endothelin receptor-like receptor) or ETBR-LP-1 (endothelin B receptor-like protein 1), is a 613 aa, multi-pass membrane protein predominantly expressed in the brain. It is a substrate of parkin (PARK2). When overexpressed in cells, GPR37 tends to become insoluble, unfolded, and ubiquitinated in vivo. Accumulation of the unfolded protein may lead to dopaminergic neuronal death in juvenile Parkinson disease (JPD). This antibody recognizes endogenous GPR37, which migrates as an approximately 50-55 kDa band in SDS-PAGE (PMID:17519329).

Storage

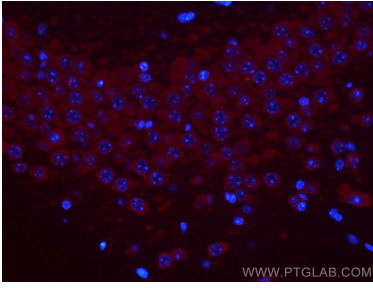
Storage:
Store at -20°C. Avoid exposure to light. Stable for one year after shipment.
Storage Buffer:
PBS with 50% Glycerol, 0.05% Proclin300, 0.5% BSA, pH 7.3.
Aliquoting is unnecessary for -20°C storage

*** 20ul sizes contain 0.1% BSA

For technical support and original validation data for this product please contact:
T: 1 (888) 4PTGLAB (1-888-478-4522) (toll free in USA), or 1(312) 455-8498 (outside USA)
E: proteintech@ptglab.com
W: ptglab.com

This product is exclusively available under Proteintech Group brand and is not available to purchase from any other manufacturer.

Selected Validation Data



Immunofluorescent analysis of (4% PFA) fixed mouse brain tissue using CoraLite®594 GPR37/Pael-R antibody (CL594-14820) at dilution of 1:200.



Immunofluorescent analysis of (4% PFA) fixed mouse brain tissue using CoraLite®594 GPR37/Pael-R antibody (CL594-14820) at dilution of 1:200.