

For Research Use Only

CoraLite®594-conjugated INS Polyclonal antibody

Catalog Number: CL594-15848

1 Publications



Basic Information

Catalog Number:

CL594-15848

Size:

100ul , Concentration: 1000 ug/ml by Nanodrop;

Source:

Rabbit

Isotype:

IgG

Immunogen Catalog Number:

AG8630

GenBank Accession Number:

BC005255

GeneID (NCBI):

3630

UNIPROT ID:

P01308

Full Name:

INS

Calculated MW:

110 aa, 12 kDa

Purification Method:

Antigen affinity purification

Recommended Dilutions:

IF-P 1:50-1:500

Excitation/Emission maxima wavelengths:

588 nm / 604 nm

Applications

Tested Applications:

IF-P

Cited Applications:

IF

Species Specificity:

human, mouse, rat

Cited Species:

mouse

Positive Controls:

IF-P : mouse pancreas tissue, human pancreas cancer tissue

Background Information

INS is a peptide hormone, produced by beta cells of the pancreas, and is central to regulating carbohydrate and fat metabolism in the body. It participates in glucose utilization, protein synthesis and in the formation and storage of neutral lipids. INS is synthesized as a precursor molecule, proinsulin, which is processed prior to secretion. A- and B-peptides are joined together by a disulfide bond to form INS, while the central portion of the precursor molecule is cleaved and released as the C-peptide. Defects in INS results in type 1 diabetes mellitus.

Notable Publications

Author	Pubmed ID	Journal	Application
Yage Liu	37165735	Food Funct	IF

Storage

Storage:

Store at -20°C. Avoid exposure to light. Stable for one year after shipment.

Storage Buffer:

PBS with 50% Glycerol, 0.05% Proclin300, 0.5% BSA, pH 7.3.

Aliquoting is unnecessary for -20°C storage

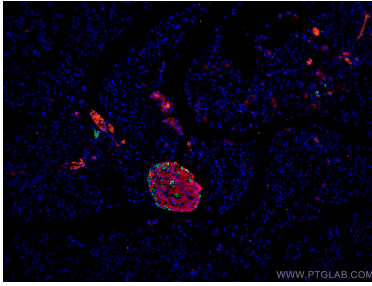
For technical support and original validation data for this product please contact:

T: 1 (888) 4PTGLAB (1-888-478-4522) (toll free in USA), or 1(312) 455-8498 (outside USA)

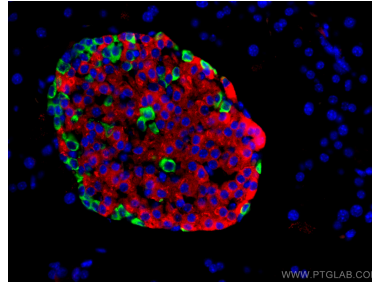
E: proteintech@ptglab.com
W: ptglab.com

This product is exclusively available under Proteintech Group brand and is not available to purchase from any other manufacturer.

Selected Validation Data



Immunofluorescent analysis of (4% PFA) fixed mouse pancreas tissue using CoraLite® 594 INS antibody (CL594-15848) at dilution of 1:200, CoraLite® 488 Glucagon antibody (CL488-15954, green).



Immunofluorescent analysis of (4% PFA) fixed mouse pancreas tissue using CoraLite® 594 INS antibody (CL594-15848) at dilution of 1:200, CoraLite® 488 Glucagon antibody (CL488-15954, green).