

For Research Use Only

CoraLite®594-conjugated CTP synthase Polyclonal antibody

Catalog Number:CL594-15914



Basic Information

Catalog Number: CL594-15914	GenBank Accession Number: BC009408	Purification Method: Antigen affinity purification
Size: 100ul , Concentration: 1000 µg/ml by Nanodrop;	GeneID (NCBI): 1503	Recommended Dilutions: IF 1:50-1:500
Source: Rabbit	Full Name: CTP synthase	Excitation/Emission maxima wavelengths: 593 nm / 614 nm
Isotype: IgG	Calculated MW: 591 aa, 67 kDa	
Immunogen Catalog Number: AG8707	Observed MW: 67 kDa	

Applications

Tested Applications: FC (Intra), IF	Positive Controls: IF : HepG2 cells,
Species Specificity: human	

Background Information

CTP synthase(CTPS) is also named as CTPS1 and belongs to the CTP synthase family. It catalyses the ATP-dependent formation of CTP from UTP using either L-glutamine or NH₃ as the nitrogen source(PMID:12752439). It is important in the biosynthesis of phospholipids and nucleic acids, and plays a key role in cell growth, development, and tumorigenesis (PMID:8813694). CTP synthetase exists as a dimer in the absence of its substrates ATP and UTP, but in the presence of saturating concentrations of these substrates the enzyme exists as a tetramer. (PMID:18439916)

Storage

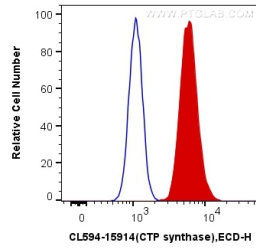
Storage:
Store at -20°C. Avoid exposure to light.
Storage Buffer:
PBS with 50% Glycerol, 0.05% Proclin300, 0.5% BSA, pH 7.3.
Aliquoting is unnecessary for -20°C storage

*** 20ul sizes contain 0.1% BSA

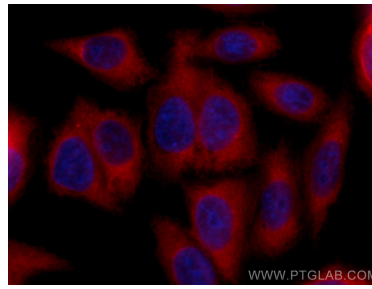
For technical support and original validation data for this product please contact:
T: 1 (888) 4PTGLAB (1-888-478-4522) (toll free in USA), or 1(312) 455-8498 (outside USA)
E: proteintech@ptglab.com
W: ptglab.com

This product is exclusively available under Proteintech Group brand and is not available to purchase from any other manufacturer.

Selected Validation Data



1X10⁶ HepG2 cells were intracellularly stained with 0.4 ug CoraLite®594 Anti-Human CTP synthase (CL594-15914) (red), or 0.4 ug Control Antibody. Cells were fixed with 4% PFA and permeabilized with Flow Cytometry Perm Buffer (PF00011-C).



Immunofluorescent analysis of (-20°C Methanol) fixed HepG2 cells using CoraLite®594 CTP synthase antibody (CL594-15914) at dilution of 1:200.