

For Research Use Only

# CoraLite®594-conjugated CEP63 Polyclonal antibody

Catalog Number:CL594-16268

Featured Product



## Basic Information

### Catalog Number:

CL594-16268

### Size:

100ul , Concentration: 1000 ug/ml by  
Nanodrop;

### Source:

Rabbit

### Isotype:

IgG

### Immunogen Catalog Number:

AG9335

### GenBank Accession Number:

BC014050

### GeneID (NCBI):

80254

### UNIPROT ID:

Q96MT8

### Full Name:

centrosomal protein 63kDa

### Calculated MW:

703 aa, 81 kDa

### Observed MW:

57-75 kDa

### Purification Method:

Antigen affinity purification

### Recommended Dilutions:

IF/ICC 1:50-1:500

### Excitation/Emission maxima wavelengths:

588 nm / 604 nm

## Applications

### Tested Applications:

IF/ICC

### Species Specificity:

human, mouse, rat, Canine

### Positive Controls:

IF/ICC : hTERT-RPE1 cells,

## Background Information

CEP63 is a 63 kDa centrosomal protein. It is required for normal spindle assembly. It maintains centrosome numbers through centrosomal recruitment of CEP152. CEP63 recruits CDK1 to centrosomes. It plays a role in DNA damage response. This antibody can recognize all the four isoforms of CEP63 (56 kDa, 58 kDa, 63 kDa and 81 kDa).

## Storage

### Storage:

Store at -20°C. Avoid exposure to light. Stable for one year after shipment.

### Storage Buffer:

PBS with 50% Glycerol, 0.05% Proclin300, 0.5% BSA, pH 7.3.

Aliquoting is unnecessary for -20°C storage

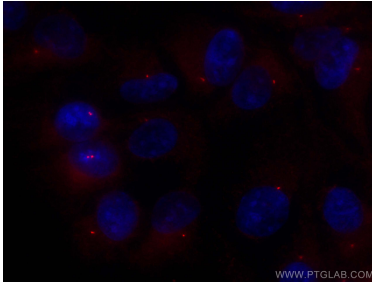
For technical support and original validation data for this product please contact:

T: 1 (888) 4PTGLAB (1-888-478-4522) (toll free  
in USA), or 1(312) 455-8498 (outside USA)

E: [proteintech@ptglab.com](mailto:proteintech@ptglab.com)  
W: [ptglab.com](http://ptglab.com)

This product is exclusively available under Proteintech Group brand and is not available to purchase from any other manufacturer.

## Selected Validation Data



Immunofluorescent analysis of (-20°C Methanol) fixed hTERT-RPE1 cells using CoraLite® 594 CEP63 antibody (CL594-16268) at dilution of 1:100.