

For Research Use Only

# CoraLite®594-conjugated NDUFA4L2 Polyclonal antibody



Catalog Number: CL594-16480

Featured Product

## Basic Information

<b>Catalog Number:</b> CL594-16480	<b>GenBank Accession Number:</b> BC011910	<b>Purification Method:</b> Antigen affinity purification
<b>Size:</b> 100ul , Concentration: 1000 µg/ml by Nanodrop;	<b>GeneID (NCBI):</b> 56901	<b>Excitation/Emission maxima wavelengths:</b> 593 nm / 614 nm
<b>Source:</b> Rabbit	<b>Full Name:</b> NADH dehydrogenase (ubiquinone) 1 alpha subcomplex, 4-like 2	
<b>Isotype:</b> IgG	<b>Calculated MW:</b> 87 aa, 10 kDa	
<b>Immunogen Catalog Number:</b> AG9600	<b>Observed MW:</b> 10 kDa	

## Applications

**Tested Applications:**  
FC (Intra)

**Species Specificity:**  
human, mouse, rat

## Background Information

NDUFA4L2(NADH dehydrogenase [ubiquinone] 1 alpha subcomplex subunit 4-like 2), also named as NUOMS, is a HIF-1α target gene that localizes to the mitochondria and belongs to the complex I NDUFA4 subunit family. It downregulates oxygen consumption and Complex I activity in hypoxia. NDUFA4L2 is involved in hypoxic adaptation by decreasing mitochondrial ROS production.

## Storage

**Storage:**  
Store at -20°C. Avoid exposure to light.

**Storage Buffer:**  
PBS with 50% Glycerol, 0.05% Proclin300, 0.5% BSA, pH 7.3.

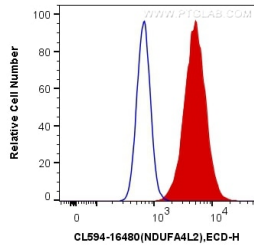
Aliquoting is unnecessary for -20°C storage

\*\*\* 20ul sizes contain 0.1% BSA

For technical support and original validation data for this product please contact:  
T: 1 (888) 4PTGLAB (1-888-478-4522) (toll free in USA), or 1(312) 455-8498 (outside USA) E: proteintech@ptglab.com W: ptglab.com

This product is exclusively available under Proteintech Group brand and is not available to purchase from any other manufacturer.

## Selected Validation Data



1X10<sup>6</sup> HepG2 cells were intracellularly stained with 0.4 ug CoraLite® 594 Anti-Human NDUFA4L2 (CL594-16480) (red), or 0.4 ug Control Antibody. Cells were fixed with 4% PFA and permeabilized with Flow Cytometry Perm Buffer (PF00011-C).