

For Research Use Only

CoraLite®594-conjugated IFT140 Polyclonal antibody

Catalog Number: CL594-17460

Featured Product



Basic Information

Catalog Number:

CL594-17460

Size:

100ul , Concentration: 1000 ug/ml by
Nanodrop;

Source:

Rabbit

Isotype:

IgG

Immunogen Catalog Number:

AG11119

GenBank Accession Number:

BC035577

GeneID (NCBI):

9742

UNIPROT ID:

Q96RY7

Full Name:

intraflagellar transport 140 homolog
(Chlamydomonas)

Calculated MW:

1462 aa, 165 kDa

Purification Method:

Antigen affinity purification

Recommended Dilutions:

IF-P 1:50-1:500

IF/ICC 1:50-1:500

Excitation/Emission maxima
wavelengths:

588 nm / 604 nm

Applications

Tested Applications:

IF/ICC, IF-P

Species Specificity:

human, mouse, rat

Positive Controls:

IF-P : mouse testis tissue,

IF/ICC : hTERT-RPE1 cells,

Background Information

IFT140 is a subunit of intraflagellar transport complex A (IFT-A) which is involved in retrograde ciliary transport. RT-PCR analysis showed it is highly expressed in kidney, moderately in ovary, testis, prostate, and lung. IFT140 is localised to the base and tip of primary cilium. IFT140 has a pivotal role in development and function of ciliated cells, and mutations of IFT140 cause skeletal, renal, and retinal ciliopathies. It had been detected as a single band around 140-165 kDa in different reports. (PMID: 20368623, 22282595)

Storage

Storage:

Store at -20°C. Avoid exposure to light. Stable for one year after shipment.

Storage Buffer:

PBS with 50% Glycerol, 0.05% Proclin300, 0.5% BSA, pH 7.3.

Aliquoting is unnecessary for -20°C storage

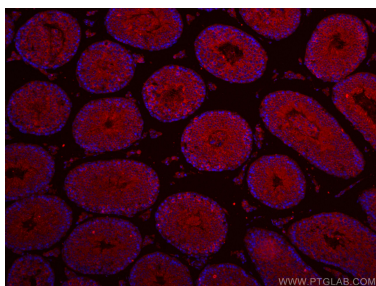
For technical support and original validation data for this product please contact:

T: 1 (888) 4PTGLAB (1-888-478-4522) (toll free
in USA), or 1(312) 455-8498 (outside USA)

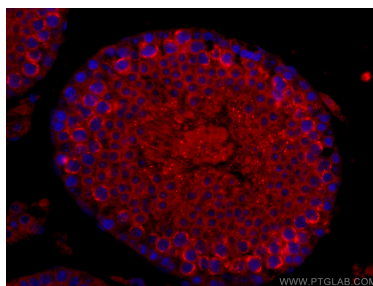
E: proteintech@ptglab.com
W: ptglab.com

This product is exclusively available under Proteintech Group brand and is not available to purchase from any other manufacturer.

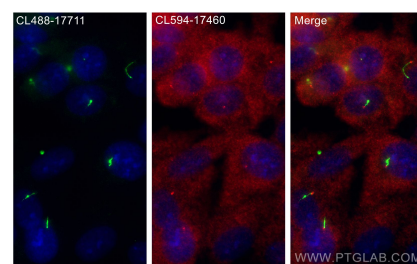
Selected Validation Data



Immunofluorescent analysis of (4% PFA) fixed mouse testis tissue using CoraLite®594 IFT140 antibody (CL594-17460) at dilution of 1:200.



Immunofluorescent analysis of (4% PFA) fixed mouse testis tissue using CoraLite®594 IFT140 antibody (CL594-17460) at dilution of 1:200.



Immunofluorescent analysis of (-20°C Methanol) fixed hTERT-RPE1 cells using CoraLite®594 IFT140 antibody (CL594-17460) at dilution of 1:200, CoraLite® Plus 488 ARL13B antibody (CL488-17711, green).