

For Research Use Only

# CoraLite®594-conjugated Beta Catenin Polyclonal antibody

Catalog Number: CL594-17565

Featured Product



## Basic Information

Catalog Number:

CL594-17565

Size:

100ul, Concentration: 1000 ug/ml by Nanodrop;

Source:

Rabbit

Isotype:

IgG

Immunogen Catalog Number:

AG11763

GenBank Accession Number:

BC058926

GeneID (NCBI):

1499

ENSEMBL Gene ID:

ENSG00000168036

UNIPROT ID:

P35222

Full Name:

catenin (cadherin-associated protein), beta 1, 88kDa

Calculated MW:

781 aa, 86 kDa

Observed MW:

92 kDa

Purification Method:

Antigen affinity purification

Recommended Dilutions:

IF/ICC 1:50-1:500

Excitation/Emission maxima wavelengths:

588 nm / 604 nm

## Applications

Tested Applications:

IF/ICC, FC (Intra)

Species Specificity:

human, mouse, rat

Positive Controls:

IF/ICC : MCF-7 cells, T-47D cells

## Background Information

$\beta$ -Catenin, also known as CTNNB1, is an evolutionarily conserved, multifunctional intracellular protein.  $\beta$ -Catenin was originally identified in cell adherens junctions (AJs) where it functions to bridge the cytoplasmic domain of cadherins to  $\alpha$ -catenin and the actin cytoskeleton. Besides its essential role in the AJs,  $\beta$ -catenin is also a key downstream component of the canonical Wnt pathway that plays diverse and critical roles in embryonic development and adult tissue homeostasis. The Wnt/ $\beta$ -catenin pathway is also involved in the activation of other intracellular messengers such as calcium fluxes, JNK, and SRC kinases. Deregulation of  $\beta$ -catenin activity is associated with multiple diseases including cancers. (PMID: 22617422; 18334222)

## Storage

Storage:

Store at -20°C. Avoid exposure to light. Stable for one year after shipment.

Storage Buffer:

PBS with 50% Glycerol, 0.05% Proclin300, 0.5% BSA, pH 7.3.

Aliquoting is unnecessary for -20°C storage

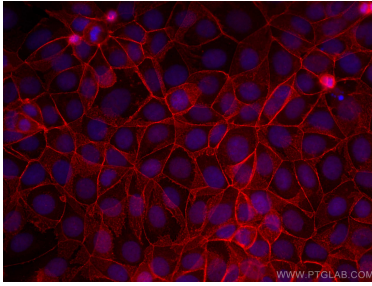
For technical support and original validation data for this product please contact:

T: 1 (888) 4PTGLAB (1-888-478-4522) (toll free in USA), or 1(312) 455-8498 (outside USA)

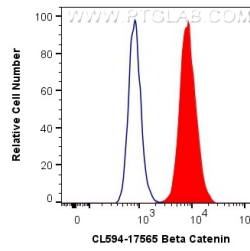
E: [proteintech@ptglab.com](mailto:proteintech@ptglab.com)  
W: [ptglab.com](http://ptglab.com)

This product is exclusively available under Proteintech Group brand and is not available to purchase from any other manufacturer.

## Selected Validation Data



Immunofluorescent analysis of (4% PFA) fixed MCF-7 cells using Coralite®594 Beta Catenin antibody (CL594-17565) at dilution of 1:200.



1X10<sup>6</sup> MCF-7 cells were intracellularly stained with 0.4 ug Coralite®594 Anti-Human Beta Catenin (CL594-17565) (red), or 0.4 ug Isotype Control. Cells were fixed with 4% PFA and permeabilized with Flow Cytometry Perm Buffer (PF00011-C).