

For Research Use Only

CoraLite®594-conjugated Nestin Polyclonal antibody

Catalog Number:CL594-19483



Basic Information

Catalog Number:

CL594-19483

Size:

100ul , Concentration: 1000 ug/ml by Nanodrop;

Source:

Rabbit

Isotype:

IgG

GenBank Accession Number:

NM_006617

GeneID (NCBI):

10763

UNIPROT ID:

P48681

Full Name:

nestin

Calculated MW:

177 kDa

Observed MW:

170-180 kDa

Purification Method:

Antigen affinity purification

Recommended Dilutions:

IF-P 1:50-1:500

Excitation/Emission maxima wavelengths:

588 nm / 604 nm

Applications

Tested Applications:

IF-P

Species Specificity:

human, mouse, rat

Positive Controls:

IF-P : rat brain tissue, human kidney tissue

Background Information

Nestin, also named as NES and Nbla00170, is a class VI intermediate filament protein expressed in stem cells of the central nervous system (CNS) but not in mature CNS cells. Its expression is used extensively as a marker for neural lineage cells derived from human embryonic stem (hES) and induced pluripotent stem (iPS) cells. Nestin is also expressed in non-neural stem cell populations such as pancreatic islet progenitors and hematopoietic progenitors.

Storage

Storage:

Store at -20°C. Avoid exposure to light. Stable for one year after shipment.

Storage Buffer:

PBS with 50% Glycerol, 0.05% Proclin300, 0.5% BSA, pH 7.3.

Aliquoting is unnecessary for -20°C storage

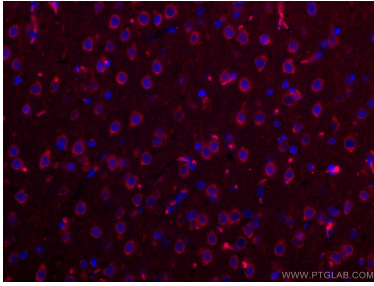
For technical support and original validation data for this product please contact:

T: 1 (888) 4PTGLAB (1-888-478-4522) (toll free in USA), or 1(312) 455-8498 (outside USA)

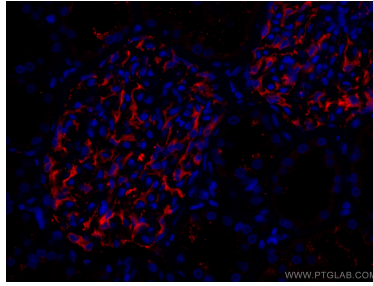
E: proteintech@ptglab.com
W: ptglab.com

This product is exclusively available under Proteintech Group brand and is not available to purchase from any other manufacturer.

Selected Validation Data



Immunofluorescent analysis of (4% PFA) fixed rat brain tissue using CoraLite®594 Nestin antibody (CL594-19483) at dilution of 1:200. DAPI (blue).



Immunofluorescent analysis of (4% PFA) fixed human kidney tissue using CoraLite®594 Nestin antibody (CL594-19483) at dilution of 1:200.