

For Research Use Only

CoraLite®594-conjugated ZP3 Polyclonal antibody

Catalog Number:CL594-21279



Basic Information

Catalog Number:

CL594-21279

Size:

100ul , Concentration: 1000 ug/ml by
Nanodrop;

Source:

Rabbit

Isotype:

IgG

Immunogen Catalog Number:

AG15791

GenBank Accession Number:

BC113949

GeneID (NCBI):

7784

UNIPROT ID:

P21754

Full Name:

zona pellucida glycoprotein 3 (sperm
receptor)

Calculated MW:

373 aa, 41 kDa

Observed MW:

47 kDa, 60 kDa

Purification Method:

Antigen affinity purification

Recommended Dilutions:

IF-P 1:50-1:500

Excitation/Emission maxima wavelengths:

588 nm / 604 nm

Applications

Tested Applications:

IF-P

Species Specificity:

human, mouse

Positive Controls:

IF-P : mouse ovary tissue,

Background Information

Zona pellucida (ZP) is an extracellular matrix that surrounds the oocyte and early embryo, which mediates species-specific sperm binding, induction of the acrosome reaction and prevents post-fertilization polyspermy. Mammalian ZP consists of three to four glycoproteins, called ZP1, ZP2, ZP3, ZP4. ZP3 (zona pellucida glycoprotein 3, also known as zona pellucida sperm-binding protein 3) is essential for sperm binding and zona matrix formation. Human ZP3 gene encodes predicted precursor protein of 47 kDa that are processed into mature glycoprotein with larger apparent molecular mass (PMID: 8588935; 10341000).

Storage

Storage:

Store at -20°C. Avoid exposure to light. Stable for one year after shipment.

Storage Buffer:

PBS with 50% Glycerol, 0.05% Proclin300, 0.5% BSA, pH 7.3.

Aliquoting is unnecessary for -20°C storage

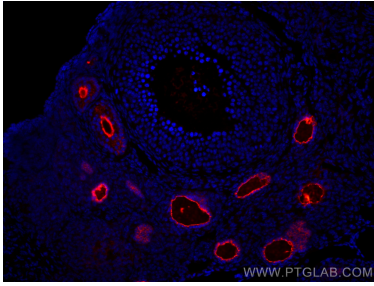
For technical support and original validation data for this product please contact:

T: 1 (888) 4PTGLAB (1-888-478-4522) (toll free
in USA), or 1(312) 455-8498 (outside USA)

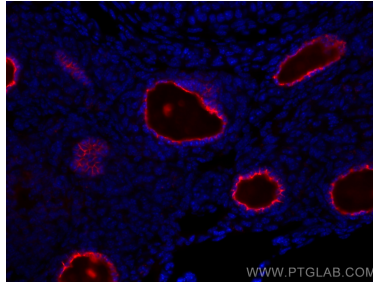
E: proteintech@ptglab.com
W: ptglab.com

This product is exclusively available under Proteintech Group brand and is not available to purchase from any other manufacturer.

Selected Validation Data



Immunofluorescent analysis of (4% PFA) fixed mouse ovary tissue using CoraLite®594 ZP3 antibody (CL594-21279) at dilution of 1:200.



Immunofluorescent analysis of (4% PFA) fixed mouse ovary tissue using CoraLite®594 ZP3 antibody (CL594-21279) at dilution of 1:200.