

For Research Use Only

CoraLite®594-conjugated CEP164 Polyclonal antibody



Catalog Number:CL594-22227

Basic Information

Catalog Number: CL594-22227	GenBank Accession Number: BC000602	Purification Method: Antigen affinity purification
Size: 100ul , Concentration: 1000 µg/ml by Nanodrop;	GeneID (NCBI): 22897	Recommended Dilutions: IF 1:50-1:500
Source: Rabbit	Full Name: centrosomal protein 164kDa	Excitation/Emission maxima wavelengths: 593 nm / 614 nm
Isotype: IgG	Calculated MW: 1460 aa, 164 kDa	
Immunogen Catalog Number: AG17570	Observed MW: 164 kDa	

Applications

Tested Applications: IF	Positive Controls: IF : MDCK cells,
Species Specificity: human, Canine	

Background Information

CEP164, also named as KIAA1052 or NPHP15, is a 1460 amino acid protein, which contains 1 WW domain. CEP164 localizes in the microtubule organizing center and is expressed in several cell lines. CEP164 plays a role in microtubule organization and/or maintenance for the formation of primary cilia, a microtubule-based structure that protrudes from the surface of epithelial cells. CEP164 plays a critical role in G2/M checkpoint and nuclear divisions. The expression of CEP164 is normally limited to the mother centriole, and CEP164 can be used as a useful marker for mother centriole.

Storage

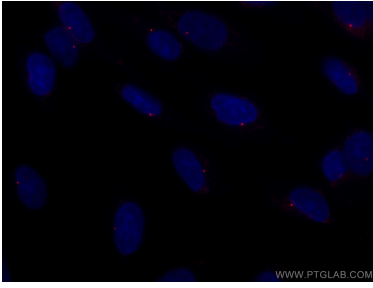
Storage:
Store at -20°C. Avoid exposure to light.
Storage Buffer:
PBS with 50% Glycerol, 0.05% Proclin300, 0.5% BSA, pH 7.3.
Aliquoting is unnecessary for -20°C storage

*** 20ul sizes contain 0.1% BSA

For technical support and original validation data for this product please contact:
T: 1 (888) 4PTGLAB (1-888-478-4522) (toll free in USA), or 1(312) 455-8498 (outside USA)
E: proteintech@ptglab.com
W: ptglab.com

This product is exclusively available under Proteintech Group brand and is not available to purchase from any other manufacturer.

Selected Validation Data



Immunofluorescent analysis of (-20°C Ethanol) fixed MDCK cells using CoraLite® 594 CEP164 antibody (CL594-22227) at dilution of 1:100.