

For Research Use Only

# CoraLite®594-conjugated YTHDF2 Polyclonal antibody



Catalog Number: CL594-24744

Featured Product

## Basic Information

<b>Catalog Number:</b> CL594-24744	<b>GenBank Accession Number:</b> BC002559	<b>Purification Method:</b> Antigen affinity purification
<b>Size:</b> 100ul , Concentration: 1000 µg/ml by Nanodrop;	<b>GeneID (NCBI):</b> 51441	<b>Excitation/Emission maxima wavelengths:</b> 593 nm / 614 nm
<b>Source:</b> Rabbit	<b>Full Name:</b> YTH domain family, member 2	
<b>Isotype:</b> IgG	<b>Calculated MW:</b> 62 kDa	
<b>Immunogen Catalog Number:</b> AG5922	<b>Observed MW:</b> 62 kDa	

## Applications

**Tested Applications:**  
FC (Intra)

**Species Specificity:**  
human, mouse, rat

## Background Information

YTHDF2 also named as CLL associated antigen KW 14 or HGRG8 is a 579 amino acid protein, which contains one YTH domain and exists as two alternatively spliced isoforms. YTHDF2 is expressed in in pancreas, testis and placenta. YTHDF2 may play a role in human longevity.

## Storage

**Storage:**  
Store at -20°C. Avoid exposure to light.

**Storage Buffer:**  
PBS with 50% Glycerol, 0.05% Proclin300, 0.5% BSA, pH 7.3.

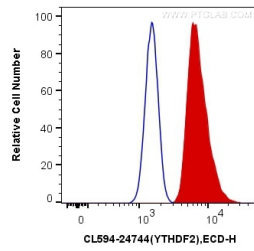
**Aliquoting is unnecessary for -20°C storage**

\*\*\* 20ul sizes contain 0.1% BSA

For technical support and original validation data for this product please contact:  
T: 1 (888) 4PTGLAB (1-888-478-4522) (toll free in USA), or 1(312) 455-8498 (outside USA)  
E: [proteintech@ptglab.com](mailto:proteintech@ptglab.com)  
W: [ptglab.com](http://ptglab.com)

This product is exclusively available under Proteintech Group brand and is not available to purchase from any other manufacturer.

## Selected Validation Data



1X10<sup>6</sup> HeLa cells were intracellularly stained with 0.8 ug CoraLite®594 Anti-Human YTHDF2 (CL594-24744) (red), or 0.8 ug Control Antibody. Cells were fixed with 4% PFA and permeabilized with Flow Cytometry Perm Buffer (PF00011-C).