

For Research Use Only

CoraLite® Plus 594-conjugated WFS1 Polyclonal antibody



Catalog Number: CL594-26995

Featured Product

Basic Information

Catalog Number: CL594-26995	GenBank Accession Number: BC030130	Purification Method: Antigen affinity purification
Size: 100ul , Concentration: 1000 µg/ml by Nanodrop;	GeneID (NCBI): 7466	Recommended Dilutions: IF 1:50-1:500
Source: Rabbit	Full Name: Wolfram syndrome 1 (wolframin)	Excitation/Emission maxima wavelengths: 594 nm / 615 nm
Isotype: IgG	Calculated MW: 890 aa, 100 kDa	
Immunogen Catalog Number: AG25724		

Applications

Tested Applications: IF	Positive Controls: IF : rat brain tissue, mouse brain tissue
Species Specificity: human, mouse, rat	

Background Information

Wolfram syndrome protein (WFS1), also called wolframin, is a transmembrane protein, which is located primarily in the endoplasmic reticulum and its expression is induced in response to ER stress, partially through transcriptional activation. ER localization suggests that WFS1 protein has physiological functions in membrane trafficking, secretion, processing and/or regulation of ER calcium homeostasis. It is ubiquitously expressed with highest levels in brain, pancreas, heart, and insulinoma beta-cell lines. Mutations of the WFS1 gene are responsible for two hereditary diseases, autosomal recessive Wolfram syndrome and autosomal dominant low frequency sensorineural hearing loss.

Storage

Storage:
Store at -20°C. Avoid exposure to light. Stable for one year after shipment.
Storage Buffer:
PBS with 50% Glycerol, 0.05% Proclin300, 0.5% BSA, pH 7.3.
Aliquoting is unnecessary for -20°C storage

*** 20ul sizes contain 0.1% BSA

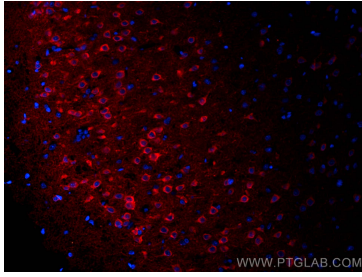
For technical support and original validation data for this product please contact:

T: 1 (888) 4PTGLAB (1-888-478-4522) (toll free
in USA), or 1(312) 455-8498 (outside USA)

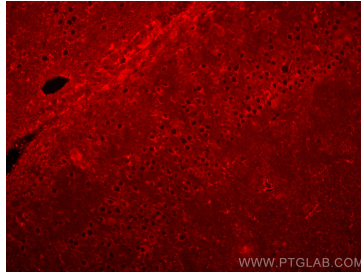
E: proteintech@ptglab.com
W: ptglab.com

This product is exclusively available under Proteintech Group brand and is not available to purchase from any other manufacturer.

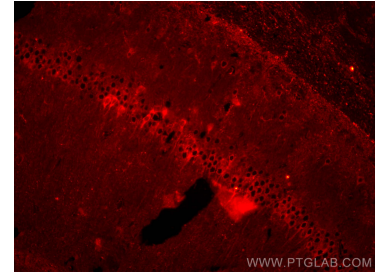
Selected Validation Data



Immunofluorescent analysis of (4% PFA) fixed rat brain tissue using CoraLite® Plus 594 WFS1 antibody (CL594-26995) at dilution of 1:200.



Immunofluorescent analysis of (4% PFA) fixed mouse brain tissue using CoraLite® Plus 594 WFS1 antibody (CL594-26995) at dilution of 1:200.



Immunofluorescent analysis of (4% PFA) fixed mouse brain tissue using CoraLite® Plus 594 WFS1 antibody (CL594-26995) at dilution of 1:200.