

For Research Use Only

CoraLite®594-conjugated Occludin Polyclonal antibody

Catalog Number:CL594-27260



Basic Information

Catalog Number: CL594-27260	GenBank Accession Number: BC029886	Purification Method: Antigen affinity purification
Size: 100ul , Concentration: 1000 ug/ml by Nanodrop;	GeneID (NCBI): 4950	Recommended Dilutions: IF/ICC 1:50-1:500
Source: Rabbit	UNIPROT ID: Q16625	Excitation/Emission maxima wavelengths: 588 nm / 604 nm
Isotype: IgG	Full Name: occludin	
Immunogen Catalog Number: AG26173	Calculated MW: 522 aa, 59 kDa	

Applications

Tested Applications: IF/ICC, FC (Intra)	Positive Controls: IF/ICC : MCF-7 cells,
Species Specificity: human	

Background Information

Occludin is an integral membrane protein located at the tight junction. It is a tetraspanin protein with four transmembrane domains, intracellular N and C termini and two extracellular loops. Occludin plays a role in the formation and regulation of the tight junction paracellular permeability barrier. Occludin can exist in different isoforms, owing to modifications at the posttranscriptional and posttranslational levels, the monomeric occludin migrates as 53-65 kDa on SDS-PAGE (PMID: 22083955; 19457074).

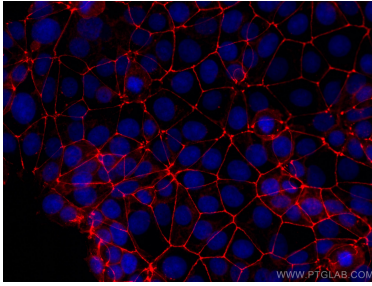
Storage

Storage:
Store at -20°C. Avoid exposure to light. Stable for one year after shipment.
Storage Buffer:
PBS with 50% Glycerol, 0.05% Proclin300, 0.5% BSA, pH 7.3.
Aliquoting is unnecessary for -20°C storage

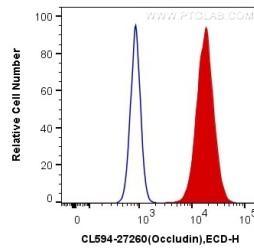
For technical support and original validation data for this product please contact:
T: 1 (888) 4PTGLAB (1-888-478-4522) (toll free in USA), or 1(312) 455-8498 (outside USA)
E: proteintech@ptglab.com
W: ptglab.com

This product is exclusively available under Proteintech Group brand and is not available to purchase from any other manufacturer.

Selected Validation Data



Immunofluorescent analysis of (-20°C Ethanol) fixed MCF-7 cells using CoraLite®594 Occludin antibody (CL594-27260) at dilution of 1:200.



1X10⁶ MCF-7 cells were intracellularly stained with 0.4 ug CoraLite®594 Anti-Human Occludin (CL594-27260) (red), or 0.4 ug Control Antibody. Cells were fixed with 4% PFA and permeabilized with Flow Cytometry Perm Buffer (PF00011-C).