

For Research Use Only

CoraLite®594-conjugated Ki67 Polyclonal antibody



Catalog Number:CL594-27309

Featured Product

Basic Information

Catalog Number:

CL594-27309

Size:

100ul , Concentration: 1000 µg/ml by Nanodrop;

Source:

Rabbit

Isotype:

IgG

Immunogen Catalog Number:

AG26266

GenBank Accession Number:

NM_002417

GeneID (NCBI):

4288

Full Name:

antigen identified by monoclonal antibody Ki-67

Calculated MW:

359 kDa

Purification Method:

Antigen affinity purification

Recommended Dilutions:

IF 1:50-1:500

Excitation/Emission maxima wavelengths:

588 nm / 604 nm

Applications

Tested Applications:

FC (Intra), IF

Species Specificity:

human

Positive Controls:

IF : HeLa cells,

Background Information

The Ki-67 protein (also known as MKI67) is a cellular marker for proliferation. Ki67 is present during all active phases of the cell cycle (G1, S, G2 and M), but is absent in resting cells (G0). Cellular content of Ki-67 protein markedly increases during cell progression through S phase of the cell cycle. Therefore, the nuclear expression of Ki67 can be evaluated to assess tumor proliferation by immunohistochemistry. It has been demonstrated to be of prognostic value in breast cancer. In head and neck cancer, several studies have reported an association between high proliferative activity and poorer prognosis.

Storage

Storage:

Store at -20°C. Avoid exposure to light. Stable for one year after shipment.

Storage Buffer:

PBS with 50% Glycerol, 0.05% Proclin300, 0.5% BSA, pH 7.3.

Aliquoting is unnecessary for -20°C storage

*** 20ul sizes contain 0.1% BSA

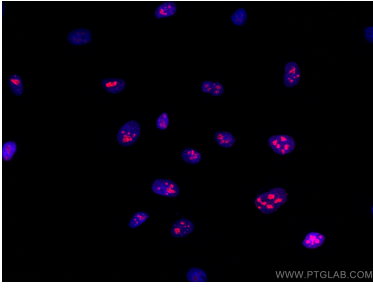
For technical support and original validation data for this product please contact:

T: 1 (888) 4PTGLAB (1-888-478-4522) (toll free in USA), or 1(312) 455-8498 (outside USA)

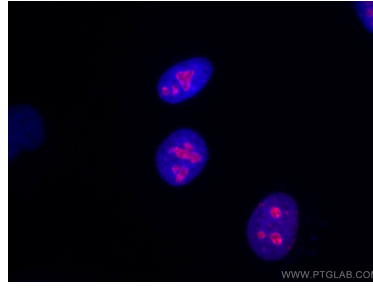
E: proteintech@ptglab.com
W: ptglab.com

This product is exclusively available under Proteintech Group brand and is not available to purchase from any other manufacturer.

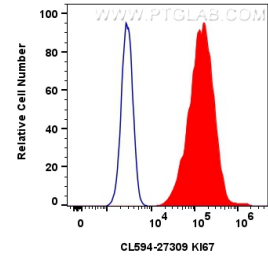
Selected Validation Data



Immunofluorescent analysis of (4% PFA) fixed HeLa cells using CoraLite@594 KI67 antibody (CL594-27309) at dilution of 1:200.



Immunofluorescent analysis of (4% PFA) fixed HeLa cells using CoraLite@594 KI67 antibody (CL594-27309) at dilution of 1:200.



1x10⁶ Ramos cells were intracellularly stained with 0.8 ug CoraLite@594 Anti-Human KI67 (CL594-27309)(red), or 0.8 ug CoraLite@594-conjugated Rabbit IgG control Rabbit PolyAb (CL594-30000) (blue). Cells were fixed and permeabilized with True-Nuclear Transcription Factor Buffer Set.