

For Research Use Only

# CoraLite® Plus 594-conjugated Ki-67 Polyclonal antibody

Catalog Number: CL594-28074



## Basic Information

<b>Catalog Number:</b> CL594-28074	<b>GenBank Accession Number:</b> NM_001081117	<b>Purification Method:</b> Antigen affinity purification
<b>Size:</b> 100ul , Concentration: 1000 ug/ml by Nanodrop;	<b>GeneID (NCBI):</b> 17345	<b>Recommended Dilutions:</b> IF-P 1:50-1:500
<b>Source:</b> Rabbit	<b>UNIPROT ID:</b> E9PVX6	<b>Excitation/Emission maxima wavelengths:</b> 594 nm / 615 nm
<b>Isotype:</b> IgG	<b>Full Name:</b> antigen identified by monoclonal antibody Ki 67	
<b>Immunogen Catalog Number:</b> AG27894	<b>Calculated MW:</b> 351 kDa	

## Applications

<b>Tested Applications:</b> IF-P	<b>Positive Controls:</b> IF-P : mouse colon tissue, mouse spleen tissue
<b>Species Specificity:</b> mouse	

## Background Information

The Ki-67 protein (also known as MKI67) is a cellular marker for proliferation. Ki67 is present during all active phases of the cell cycle (G1, S, G2 and M), but is absent in resting cells (G0). Cellular content of Ki-67 protein markedly increases during cell progression through S phase of the cell cycle. Therefore, the nuclear expression of Ki67 can be evaluated to assess tumor proliferation by immunohistochemistry.

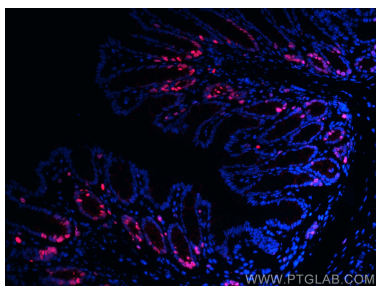
## Storage

**Storage:**  
Store at -20°C. Avoid exposure to light. Stable for one year after shipment.  
**Storage Buffer:**  
PBS with 50% Glycerol, 0.05% Proclin300, 0.5% BSA, pH 7.3.  
Aliquoting is unnecessary for -20°C storage

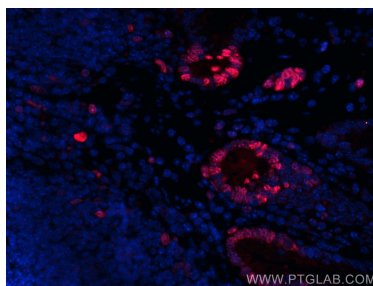
For technical support and original validation data for this product please contact:  
T: 1 (888) 4PTGLAB (1-888-478-4522) (toll free in USA), or 1(312) 455-8498 (outside USA)  
E: [proteintech@ptglab.com](mailto:proteintech@ptglab.com)  
W: [ptglab.com](http://ptglab.com)

This product is exclusively available under Proteintech Group brand and is not available to purchase from any other manufacturer.

## Selected Validation Data



Immunofluorescent analysis of (4% PFA) fixed mouse colon tissue using CoraLite® Plus 594 ki67 antibody (CL594-28074) at dilution of 1:200.



Immunofluorescent analysis of (4% PFA) fixed mouse colon tissue using CoraLite® Plus 594 ki67 antibody (CL594-28074) at dilution of 1:200.