

For Research Use Only

CoraLite®594-conjugated DYNC2H1 Polyclonal antibody

Catalog Number:CL594-29758



Basic Information

Catalog Number:

CL594-29758

Size:

100ul , Concentration: 1000 ug/ml by Nanodrop;

Source:

Rabbit

Isotype:

IgG

Immunogen Catalog Number:

AG30707

GenBank Accession Number:

NM_001377

GeneID (NCBI):

79659

UNIPROT ID:

Q8NCM8

Full Name:

dynein, cytoplasmic 2, heavy chain 1

Calculated MW:

493 kDa

Observed MW:

493 kDa

Purification Method:

Antigen affinity purification

Recommended Dilutions:

IF/ICC: 1:50-1:500

Excitation/Emission maxima wavelengths:

588 nm / 604 nm

Applications

Tested Applications:

IF/ICC

Species Specificity:

human, mouse

Positive Controls:

IF/ICC : hTERT-RPE1 cells,

Background Information

DYNC2H1 (Cytoplasmic dynein 2 heavy chain 1) is involved in ciliary intraflagellar transport (IFT). DYNC2H1 drives retrograde transport of the IFT-A protein complex that regulates tip-to-base transport in cilia, involved in the generation and maintenance of cilia. DYNC2H1 variants or retina-predominant variants cause nonsyndromic retinal degeneration (PMID:32753734). DYNC2H1 mutations also cause asphyxiating thoracic dystrophy and short rib-polydactyly syndrome (PMID: 19442771). DYNC2H1 was localized to the basal bodies by immunofluorescence staining (PMID: 21552265, PMID: 26077881, PMID: 30320547).

Storage

Storage:

Store at -20°C. Avoid exposure to light. Stable for one year after shipment.

Storage Buffer:

PBS with 50% glycerol, 0.05% Proclin300, 0.5% BSA, pH7.3

Aliquoting is unnecessary for -20°C storage

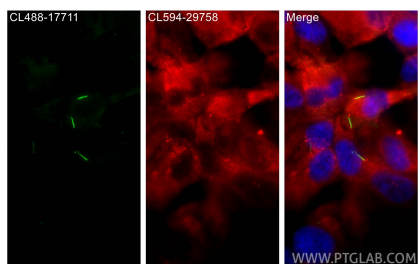
For technical support and original validation data for this product please contact:

T: 1 (888) 4PTGLAB (1-888-478-4522) (toll free in USA), or 1(312) 455-8498 (outside USA)

E: proteintech@ptglab.com
W: ptglab.com

This product is exclusively available under Proteintech Group brand and is not available to purchase from any other manufacturer.

Selected Validation Data



Immunofluorescent analysis of (4% PFA) fixed hTERT-RPE1 cells using CoraLite®594 DYNC2H1 antibody (CL594-29758) at dilution of 1:200, CoraLite® Plus 488 ARL13B antibody (CL488-17711, green).