

For Research Use Only

CoraLite®594-conjugated Rabbit IgG control Polyclonal antibody



Catalog Number: **CL594-30000**

Basic Information

Catalog Number: CL594-30000	GenBank Accession Number: GeneID (NCBI):	Purification Method: N/A
Size: 100ul , Concentration: 1000 µg/ml by Nanodrop;	Full Name:	Excitation/Emission maxima wavelengths: 593 nm / 614 nm
Source: Rabbit		
Isotype: IgG		

Applications

Tested Applications:
FC
Species Specificity:

Background Information

This product is Normal rabbit IgG (without immunized) which purified with Protein A. Normal Rabbit IgG is an isotype control antibody, which is used to estimate the non-specific binding of target primary antibodies due to Fc receptor binding or other protein-protein interactions. An isotype control antibody should have the same immunoglobulin type and be used at the same concentration as the test antibody.

Storage

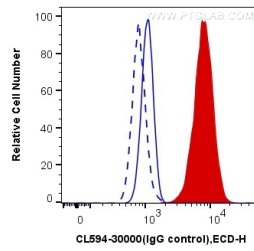
Storage:
Store at -20°C. Avoid exposure to light. Stable for one year after shipment.
Storage Buffer:
PBS with 50% Glycerol, 0.05% Proclin300, 0.5% BSA, pH 7.3.
Aliquoting is unnecessary for -20°C storage

*** 20ul sizes contain 0.1% BSA

For technical support and original validation data for this product please contact:
T: 1 (888) 4PTGLAB (1-888-478-4522) (toll free in USA), or 1(312) 455-8498 (outside USA)
E: proteintech@ptglab.com
W: ptglab.com

This product is exclusively available under Proteintech Group brand and is not available to purchase from any other manufacturer.

Selected Validation Data



1×10^6 HeLa cells were intracellularly stained with 0.4 μ g CoraLite®594-conjugated Rabbit IgG control (CL594-30000) (blue, solid line) or 0.4 μ g CoraLite®594 Anti-Galectin-3 (CL594-14979) (red), or not stained (blank) (blue, dashed line). Cells were fixed with 4% PFA and permeabilized with Flow Cytometry Perm Buffer (PF00011-C).