

For Research Use Only

CoraLite®594-conjugated KMO Monoclonal antibody



Catalog Number:CL594-60029

Basic Information

Catalog Number: CL594-60029	GenBank Accession Number: BC005297	Purification Method: Protein G purification
Size: 100ul , Concentration: 1000 µg/ml by Nanodrop;	GeneID (NCBI): 8564	CloneNo.: 2D2F2
Source: Mouse	Full Name: kynurenine 3-monooxygenase (kynurenine 3-hydroxylase)	Recommended Dilutions: IF 1:50-1:500
Isotype: IgG1	Calculated MW: 486 aa, 56 kDa	Excitation/Emission maxima wavelengths: 588 nm / 604 nm
Immunogen Catalog Number: AG1109	Observed MW: 56 kDa	

Applications

Tested Applications: IF	Positive Controls: IF : C6 cells,
Species Specificity: human, mouse, rat	

Background Information

KMO(Kynurenine 3-monooxygenase) is a membrane protein located on the outer membrane of mitochondria. Tissue distribution studies have revealed that, in rats, highest enzyme activity is found in kidney and liver, with brain having the least activity in comparison to peripheral organs(PMID: 9237672).

Storage

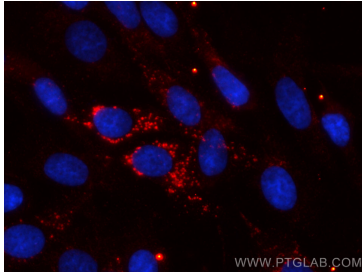
Storage:
Store at -20°C. Avoid exposure to light. Stable for one year after shipment.
Storage Buffer:
PBS with 50% Glycerol, 0.05% Proclin300, 0.5% BSA, pH 7.3.
Aliquoting is unnecessary for -20°C storage

*** 20ul sizes contain 0.1% BSA

For technical support and original validation data for this product please contact:
T: 1 (888) 4PTGLAB (1-888-478-4522) (toll free in USA), or 1(312) 455-8498 (outside USA)
E: proteintech@ptglab.com
W: ptglab.com

This product is exclusively available under Proteintech Group brand and is not available to purchase from any other manufacturer.

Selected Validation Data



Immunofluorescent analysis of (4% PFA) fixed C6 cells using Coralite® 594 KMO antibody (CL594-60029, Clone: 2D2F2) at dilution of 1:200.