

For Research Use Only

CoraLite®594-conjugated STOML2 Monoclonal antibody

Catalog Number:CL594-60052

Featured Product



Basic Information

Catalog Number:

CL594-60052

Size:

100ul , Concentration: 1000 ug/ml by Nanodrop;

Source:

Mouse

Isotype:

IgG2b

Immunogen Catalog Number:

AG0363

GenBank Accession Number:

BC002442

GeneID (NCBI):

30968

UNIPROT ID:

Q9UJZ1

Full Name:

stomatin (EPB72)-like 2

Calculated MW:

356 aa, 39 kDa

Observed MW:

39 kDa

Purification Method:

Protein A purification

CloneNo.:

1A2E9

Recommended Dilutions:

IF/ICC 1:50-1:500

Excitation/Emission maxima wavelengths:

588 nm / 604 nm

Applications

Tested Applications:

IF/ICC

Species Specificity:

human, mouse, rat, pig

Positive Controls:

IF/ICC : A431 cells,

Background Information

Human stomatin (band 7.2b) is a 31-kDa erythrocyte membrane protein of unknown function but implicated in the control of ion channel permeability, mechanoreception, and lipid domain organization. Stomatin (EPB72)-like 2 (STOML2, synonyms: SLP-2, HSPC108) is a 38.5-kDa protein that is overall approximately 20% similar to human stomatin. STOML2 is also present in mature human erythrocytes, but lacks a characteristic NH(2)-terminal hydrophobic domain found in other stomatin homologues. STOML2 may link stomatin or other integral membrane proteins to the peripheral cytoskeleton and thereby play a role in regulating ion channel conductances or the organization of sphingolipid and cholesterol-rich lipid rafts.

Storage

Storage:

Store at -20°C. Avoid exposure to light. Stable for one year after shipment.

Storage Buffer:

PBS with 50% Glycerol, 0.05% Proclin300, 0.5% BSA, pH 7.3.

Aliquoting is unnecessary for -20°C storage

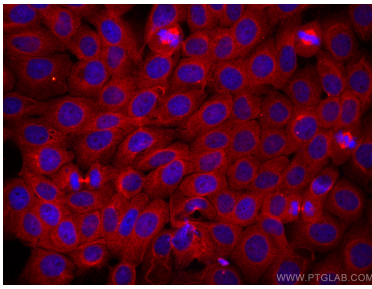
For technical support and original validation data for this product please contact:

T: 1 (888) 4PTGLAB (1-888-478-4522) (toll free in USA), or 1(312) 455-8498 (outside USA)

E: proteintech@ptglab.com
W: ptglab.com

This product is exclusively available under Proteintech Group brand and is not available to purchase from any other manufacturer.

Selected Validation Data



Immunofluorescent analysis of (4% PFA) fixed A431 cells using CoraLite®594 STOML2 antibody (CL594-60052, Clone: 1A2E9) at dilution of 1:200.