

For Research Use Only

CoraLite®594-conjugated Syntaxin 6

Monoclonal antibody



Catalog Number: **CL594-60059**

Basic Information

Catalog Number: CL594-60059	GenBank Accession Number: BC009944	Purification Method: Protein G purification
Size: 100ul , Concentration: 1000 µg/ml by Nanodrop;	GeneID (NCBI): 10228	CloneNo.: 2B6G4
Source: Mouse	Full Name: syntaxin 6	Recommended Dilutions: IF 1:50-1:500
Isotype: IgG1	Calculated MW: 29 kDa	Excitation/Emission maxima wavelengths: 588 nm / 604 nm
Immunogen Catalog Number: AG1284		

Applications

Tested Applications: IF	Positive Controls: IF : PC-12 cells,
Species Specificity: human, mouse	

Background Information

Syntaxin-6 (STX6) is a SNARE protein located in the trans-Golgi network (TGN) and endosomes. It associates with a variety of SNARE proteins and is involved in intracellular vesicle trafficking. STX6 is required for sorting proteins from endosomes toward either the TGN or lysosomes.

Storage

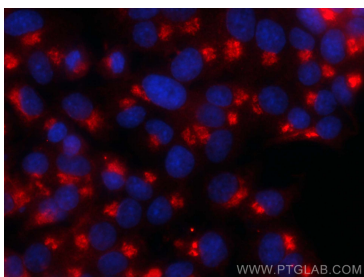
Storage:
Store at -20°C. Avoid exposure to light. Stable for one year after shipment.
Storage Buffer:
PBS with 50% Glycerol, 0.05% Proclin300, 0.5% BSA, pH 7.3.
Aliquoting is unnecessary for -20°C storage

*** 20ul sizes contain 0.1% BSA

For technical support and original validation data for this product please contact:
T: 1 (888) 4PTGLAB (1-888-478-4522) (toll free in USA), or 1(312) 455-8498 (outside USA)
E: proteintech@ptglab.com
W: ptglab.com

This product is exclusively available under Proteintech Group brand and is not available to purchase from any other manufacturer.

Selected Validation Data



Immunofluorescent analysis of (4% PFA) fixed PC-12 cells using CoraLite®594 Syntaxin 6 antibody (CL594-60059, Clone: 2B6G4) at dilution of 1:200.