

For Research Use Only

CoraLite®594-conjugated ST2 Monoclonal antibody



Catalog Number:CL594-60112

Basic Information

Catalog Number: CL594-60112	GenBank Accession Number: BC030975	Purification Method: Protein G purification
Size: 100ul , Concentration: 1000 µg/ml by Nanodrop;	GeneID (NCBI): 9173	CloneNo.: 7A2A7
Source: Mouse	Full Name: interleukin 1 receptor-like 1	Excitation/Emission maxima wavelengths: 588 nm / 604 nm
Isotype: IgG1	Calculated MW: 63 kDa, 37 kDa, 30 kDa	
Immunogen Catalog Number: AG2555	Observed MW: 63 kDa	

Applications

Tested Applications:
FC (Intra)

Species Specificity:
human, mouse, rat, pig

Background Information

Storage

Storage:
Store at -20°C. Avoid exposure to light. Stable for one year after shipment.

Storage Buffer:
PBS with 50% Glycerol, 0.05% Proclin300, 0.5% BSA, pH 7.3.

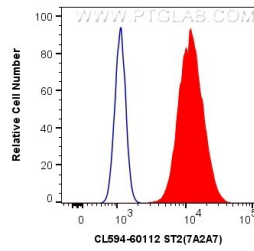
Aliquoting is unnecessary for -20°C storage

*** 20ul sizes contain 0.1% BSA

For technical support and original validation data for this product please contact:
T: 1 (888) 4PTGLAB (1-888-478-4522) (toll free in USA), or 1(312) 455-8498 (outside USA)
E: proteintech@ptglab.com
W: ptglab.com

This product is exclusively available under Proteintech Group brand and is not available to purchase from any other manufacturer.

Selected Validation Data



1X10⁶ HEK-293 cells were intracellularly stained with 0.8 ug CoraLite® 594 Anti-Human ST2 (CL594-60112, Clone:7A2A7) (red), or 0.8 ug CoraLite® 594 Mouse IgG1 Isotype Control (MOPC-21) (CL594-65124, Clone: MOPC-21) (blue). Cells were fixed with 4% PFA and permeabilized with Flow Cytometry Perm Buffer (PF00011-C).