

For Research Use Only

CoraLite®594-conjugated SERPINA10 Monoclonal antibody



Catalog Number:CL594-60113

Basic Information

| | | |
|---|---|---|
| Catalog Number: CL594-60113 | GenBank Accession Number: BC022261 | Purification Method: Protein A purification |
| Size: 100ul , Concentration: 2000 µg/ml by Bradford method using BSA as the standard; | GeneID (NCBI): 51156 | CloneNo.: 5B3C9 |
| Source: Mouse | Full Name: serpin peptidase inhibitor, clade A (alpha-1 antitrypsin), member 10 | Recommended Dilutions: IF 1:50-1:500 |
| Isotype: IgG2a | Calculated MW: 444 aa, 51 kDa | Excitation/Emission maxima wavelengths: 593 nm / 614 nm |
| Immunogen Catalog Number: AG2420 | | |

Applications

| | |
|--|--|
| Tested Applications: IF | Positive Controls: IF : HepG2 cells, |
| Species Specificity: human, rat, pig | |

Background Information

SERPINA10 belongs to the serpin family. It is predominantly expressed in the liver and secreted in plasma. It inhibits the activity of coagulation factors Xa and XIa in the presence of protein Z, calcium and phospholipid. Mutations in this gene are associated with venous thrombosis.

Storage

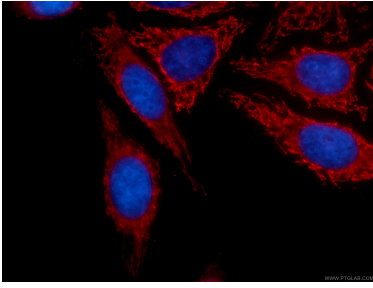
Storage:
Store at -20°C. Avoid exposure to light. Stable for one year after shipment.
Storage Buffer:
PBS with 50% Glycerol, 0.05% Proclin300, 0.5% BSA, pH 7.3.
Aliquoting is unnecessary for -20°C storage

*** 20ul sizes contain 0.1% BSA

For technical support and original validation data for this product please contact:
T: 1 (888) 4PTGLAB (1-888-478-4522) (toll free in USA), or 1(312) 455-8498 (outside USA)
E: proteintech@ptglab.com
W: ptglab.com

This product is exclusively available under Proteintech Group brand and is not available to purchase from any other manufacturer.

Selected Validation Data



Immunofluorescent analysis of (-20°C Ethanol) fixed HepG2 cells using CL594-60113 (SERPINA10 antibody) at dilution of 1:100.