

For Research Use Only

# CoraLite®594-conjugated ABCD1 Monoclonal antibody

Catalog Number: CL594-60153

Featured Product



## Basic Information

Catalog Number:

CL594-60153

Size:

100ul , Concentration: 1000 ug/ml by Nanodrop;

Source:

Mouse

Isotype:

IgG1

Immunogen Catalog Number:

AG12757

GenBank Accession Number:

BC025358

GeneID (NCBI):

215

UNIPROT ID:

P33897

Full Name:

ATP-binding cassette, sub-family D (ALD), member 1

Calculated MW:

745 aa, 83 kDa

Observed MW:

75 kDa

Purification Method:

Protein G purification

CloneNo.:

1H8E5

Recommended Dilutions:

IF/ICC 1:50-1:500

Excitation/Emission maxima wavelengths:

588 nm / 604 nm

## Applications

Tested Applications:

IF/ICC

Species Specificity:

human

Positive Controls:

IF/ICC : HeLa cells,

## Background Information

ABCD1 (also known as ALDP) is a member of the ATP-binding cassette (ABC) transporter superfamily which functions as transporter for a wide variety of substrates. It localizes to the peroxisomal membrane. The exact function is not clear so far. Various mutations of ABCD1 cause X-linked adrenoleukodystrophy (X-ALD), an inherited neurodegenerative disease affecting the nervous system white matter and adrenal cortex.

## Storage

Storage:

Store at -20°C. Avoid exposure to light. Stable for one year after shipment.

Storage Buffer:

PBS with 50% Glycerol, 0.05% Proclin300, 0.5% BSA, pH 7.3.

Aliquoting is unnecessary for -20°C storage

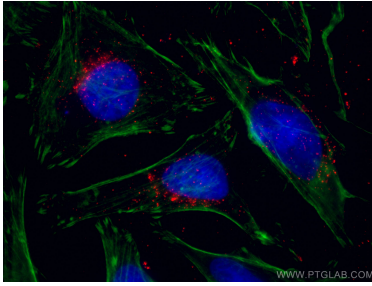
For technical support and original validation data for this product please contact:

T: 1 (888) 4PTGLAB (1-888-478-4522) (toll free in USA), or 1(312) 455-8498 (outside USA)

E: [proteintech@ptglab.com](mailto:proteintech@ptglab.com)  
W: [ptglab.com](http://ptglab.com)

This product is exclusively available under Proteintech Group brand and is not available to purchase from any other manufacturer.

## Selected Validation Data



Immunofluorescent analysis of (-20°C Ethanol) fixed HeLa cells using CoraLite®594-conjugated ABCD1 antibody (CL594-60153, Clone: 1H8E5 ) at dilution of 1:100. Green: Stain with CoraLite®488-Phalloidin (CatNo. PF00001).