

For Research Use Only

CoraLite®594-conjugated ACPP Monoclonal antibody



Catalog Number:CL594-60176

Basic Information

Catalog Number: CL594-60176	GenBank Accession Number: BC007460	Purification Method: Protein A purification
Size: 100ul , Concentration: 1000 µg/ml by 55 Nanodrop;	GeneID (NCBI): 55	CloneNo.: 1G2C9
Source: Mouse	Full Name: acid phosphatase, prostate	Recommended Dilutions: IF 1:50-1:500
Isotype: IgG2a	Calculated MW: 418 aa, 48 kDa	Excitation/Emission maxima wavelengths: 593 nm / 614 nm
Immunogen Catalog Number: AG8578	Observed MW: 45-50 kDa	

Applications

Tested Applications: IF	Positive Controls: IF : human prostate cancer tissue,
Species Specificity: human, rat	

Background Information

ACPP is also named as PAP(prostatic acid phosphatase),5'-nucleotidase,thiamine monophosphatas and Belongs to the histidine acid phosphatase family.This enzyme is a homodimeric glycoprotein with a subunit molecular mass of 50 kDa and is an androgen-stimulated secretory product of the human prostate gland(PMID:8132635).It is also a non-specific phosphatase and has been implicated in the progression of prostate cancer, which inactivates LPA in human seminal plasma(PMID:15280042). This protein has three glycosylation sites(PMID:10639192;12525165).

Storage

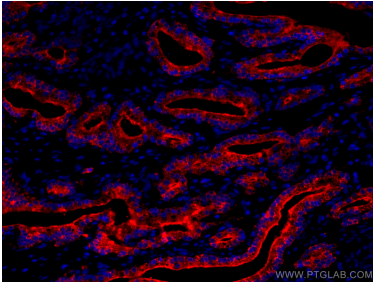
Storage:
Store at -20°C. Avoid exposure to light.
Storage Buffer:
PBS with 50% Glycerol, 0.05% Proclin300, 0.5% BSA, pH 7.3.
Aliquoting is unnecessary for -20°C storage

*** 20ul sizes contain 0.1% BSA

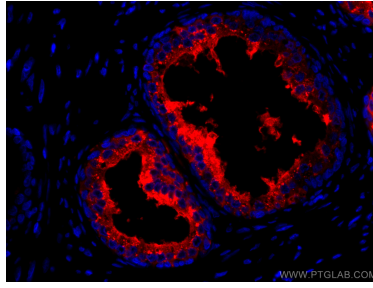
For technical support and original validation data for this product please contact:
T: 1 (888) 4PTGLAB (1-888-478-4522) (toll free in USA), or 1(312) 455-8498 (outside USA) E: proteintech@ptglab.com W: ptglab.com

This product is exclusively available under Proteintech Group brand and is not available to purchase from any other manufacturer.

Selected Validation Data



Immunofluorescent analysis of (4% PFA) fixed human prostate cancer tissue using CoraLite®594 ACPP antibody (CL594-60176, Clone: 1G2C9) at dilution of 1:200.



Immunofluorescent analysis of (4% PFA) fixed human prostate cancer tissue using CoraLite®594 ACPP antibody (CL594-60176, Clone: 1G2C9) at dilution of 1:200.