

For Research Use Only

# CoraLite®594-conjugated Cytoglobin Monoclonal antibody

Catalog Number:CL594-60228



## Basic Information

Catalog Number: CL594-60228	GenBank Accession Number: BC029798	Purification Method: Protein G purification
Size: 100ul , Concentration: 1000 µg/ml by Nanodrop;	GeneID (NCBI): 114757	CloneNo.: 4C7E11
Source: Mouse	Full Name: cytoglobin	Excitation/Emission maxima wavelengths: 588 nm / 604 nm
Isotype: IgG1	Calculated MW: 190 aa, 21 kDa	
Immunogen Catalog Number: AG4161	Observed MW: 27-29 kDa	

## Applications

Tested Applications:  
Species Specificity:  
human, mouse, pig, rat

## Background Information

Cytoglobin is a ubiquitously expressed hexacoordinate hemoglobin that may facilitate diffusion of oxygen through tissues. The protein, with calculated MW of 21 kDa, runs as a 29kd one in canine retina, kidney, liver, lung, and heart. It may be caused by posttranslational modification of the protein. Various immuno-staining patterns were reported including nuclear, cytoplasm and extracellular location.

## Storage

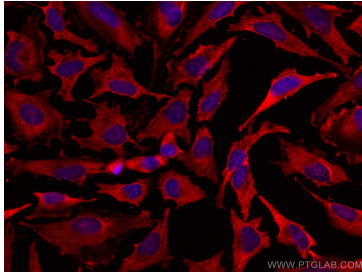
Storage:  
Store at -20°C. Avoid exposure to light. Stable for one year after shipment.  
Storage Buffer:  
PBS with 50% Glycerol, 0.05% Proclin300, 0.5% BSA, pH 7.3.  
Aliquoting is unnecessary for -20°C storage

\*\*\* 20ul sizes contain 0.1% BSA

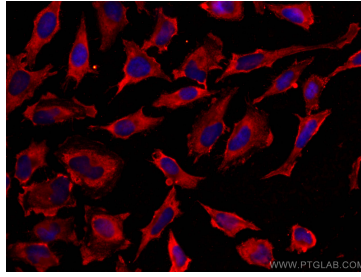
For technical support and original validation data for this product please contact:  
T: 1 (888) 4PTGLAB (1-888-478-4522) (toll free in USA), or 1(312) 455-8498 (outside USA)  
E: [proteintech@ptglab.com](mailto:proteintech@ptglab.com)  
W: [ptglab.com](http://ptglab.com)

This product is exclusively available under Proteintech Group brand and is not available to purchase from any other manufacturer.

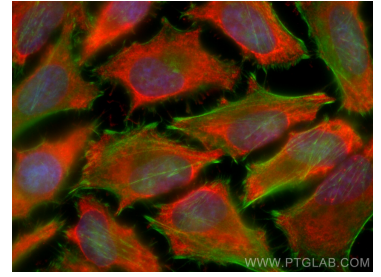
## Selected Validation Data



Immunofluorescent analysis of (-20°C Methanol) fixed HeLa cells using CoraLite®594 Cytoglobin antibody (CL594-60228, Clone: 4C7E11 ) at dilution of 1:200.



Immunofluorescent analysis of (-20°C Methanol) fixed HeLa cells using CoraLite®594 Cytoglobin antibody (CL594-60228, Clone: 4C7E11 ) at dilution of 1:200.



Immunofluorescent analysis of (-20°C Ethanol) fixed HeLa cells using CoraLite®594 Cytoglobin antibody (CL594-60228, Clone: 4C7E11 ) at dilution of 1:200, CL488-Phalloidin (green).