

For Research Use Only

CoraLite®594-conjugated PGRMC2 Monoclonal antibody

Catalog Number: CL594-60249

Featured Product



Basic Information

Catalog Number:

CL594-60249

Size:

100ul , Concentration: 1000 ug/ml by Nanodrop;

Source:

Mouse

Isotype:

IgG2a

Immunogen Catalog Number:

AG20077

GenBank Accession Number:

BC016692

GeneID (NCBI):

10424

UNIPROT ID:

O15173

Full Name:

progesterone receptor membrane component 2

Calculated MW:

223 aa, 24 kDa

Observed MW:

24+28 kDa

Purification Method:

Protein A purification

CloneNo.:

5F10D7

Recommended Dilutions:

IF-P 1:50-1:500

Excitation/Emission maxima wavelengths:

588 nm / 604 nm

Applications

Tested Applications:

IF-P, FC (Intra)

Species Specificity:

human, mouse

Positive Controls:

IF-P : human cervical cancer tissue,

Background Information

Membrane-associated progesterone receptor component 2 (PGRMC2), also known as DG6 or PMBP, belongs to the cytochrome b5 family. This protein might play a role in cancer. The gene of PGRMC2 maps to chromosome 4q26, and encodes a 223-amino acid single-pass membrane protein with a cytochrome b5 heme-binding domain in its cytoplasmic domain. PGRMC2 has a calculated molecular weight of 24 kDa. The band of about 28 kDa detected by this monoclonal antibody is unknown but may represent phosphorylated form of PGRMC2 (PMID: 28104494).

Storage

Storage:

Store at -20°C. Avoid exposure to light. Stable for one year after shipment.

Storage Buffer:

PBS with 50% Glycerol, 0.05% Proclin300, 0.5% BSA, pH 7.3.

Aliquoting is unnecessary for -20°C storage

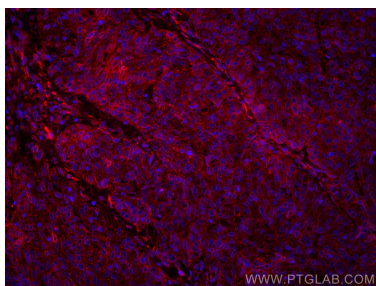
For technical support and original validation data for this product please contact:

T: 1 (888) 4PTGLAB (1-888-478-4522) (toll free in USA), or 1(312) 455-8498 (outside USA)

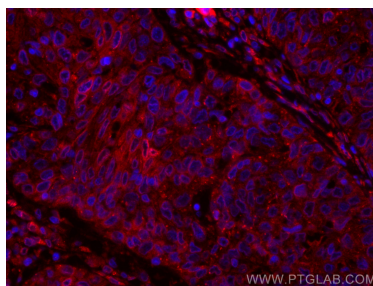
E: proteintech@ptglab.com
W: ptglab.com

This product is exclusively available under Proteintech Group brand and is not available to purchase from any other manufacturer.

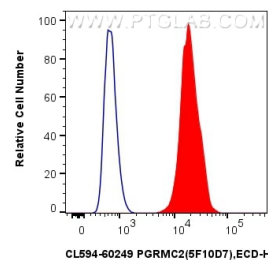
Selected Validation Data



Immunofluorescent analysis of (4% PFA) fixed human cervical cancer tissue using CoraLite®594 PGRMC2 antibody (CL594-60249, Clone: 5F10D7) at dilution of 1:200.



Immunofluorescent analysis of (4% PFA) fixed human cervical cancer tissue using CoraLite®594 PGRMC2 antibody (CL594-60249, Clone: 5F10D7) at dilution of 1:200.



1X10⁶ HepG2 cells were intracellularly stained with 0.4 ug CoraLite®594 Anti-Human PGRMC2 (CL594-60249, Clone:5F10D7) (red), or 0.4 ug CoraLite®594 Mouse IgG2a Isotype Control (C1.18.4) (CL594-65208, Clone: C1.18.4) (blue). Cells were fixed with 4% PFA and permeabilized with Flow Cytometry Perm Buffer (PF00011-C).