

For Research Use Only

# CoraLite®594-conjugated IL-36 Beta/IL-1F8 Monoclonal antibody

Catalog Number:CL594-60290



## Basic Information

Catalog Number:

CL594-60290

Size:

100ul , Concentration: 1000 ug/ml by

Nanodrop;

Source:

Mouse

Isotype:

IgG1

Immunogen Catalog Number:

AG12675

GenBank Accession Number:

BC101833

GeneID (NCBI):

27177

UNIPROT ID:

Q9NZH7

Full Name:

interleukin 1 family, member 8 (eta)

Calculated MW:

157 aa, 18 kDa

Purification Method:

Protein G purification

CloneNo.:

10D12B1

Recommended Dilutions:

IF-P 1:50-1:500

Excitation/Emission maxima

wavelengths:

588 nm / 604 nm

## Applications

Tested Applications:

IF-P

Species Specificity:

human

Positive Controls:

IF-P : human tonsillitis tissue,

## Storage

Storage:

Store at -20°C. Avoid exposure to light. Stable for one year after shipment.

Storage Buffer:

PBS with 50% Glycerol, 0.05% Proclin300, 0.5% BSA, pH 7.3.

Aliquoting is unnecessary for -20°C storage

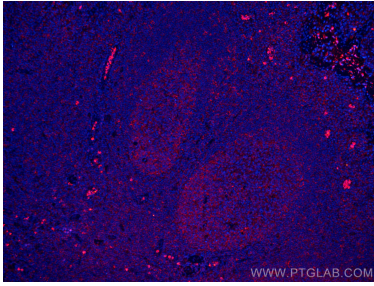
For technical support and original validation data for this product please contact:

T: 1 (888) 4PTGLAB (1-888-478-4522) (toll free  
in USA), or 1(312) 455-8498 (outside USA)

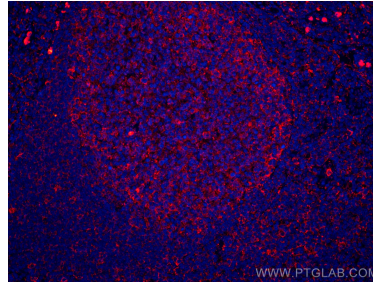
E: [proteintech@ptglab.com](mailto:proteintech@ptglab.com)  
W: [ptglab.com](http://ptglab.com)

This product is exclusively available under Proteintech Group brand and is not available to purchase from any other manufacturer.

## Selected Validation Data



Immunofluorescent analysis of (4% PFA) fixed human tonsillitis tissue using Coralite® 594 IL-36 Beta/IL-1F8 antibody (CL594-60290, Clone: 10D12B1 ) at dilution of 1:200.



Immunofluorescent analysis of (4% PFA) fixed human tonsillitis tissue using Coralite® 594 IL-36 Beta/IL-1F8 antibody (CL594-60290, Clone: 10D12B1 ) at dilution of 1:200.