

For Research Use Only

CoraLite®594-conjugated HER2/ErbB2 Monoclonal antibody

Catalog Number:CL594-60311



Basic Information

Catalog Number: CL594-60311	GenBank Accession Number: BC156755	Purification Method: Protein A purification
Size: 100ul , Concentration: 1000 ug/ml by Nanodrop;	GeneID (NCBI): 2064	CloneNo.: 1B12A7
Source: Mouse	UNIPROT ID: P04626	Recommended Dilutions: IF-P 1:50-1:500
Isotype: IgG2b	Full Name: v-erb-b2 erythroblastic leukemia viral oncogene homolog 2, neuro/glioblastoma derived oncogene homolog (avian)	Excitation/Emission maxima wavelengths: 588 nm / 604 nm
Immunogen Catalog Number: AG16463	Calculated MW: 1255 aa, 138 kDa	

Applications

Tested Applications: IF-P	Positive Controls: IF-P : human breast cancer tissue,
Species Specificity: human	

Background Information

HER2, also known as ErbB2 and Neu, is a 185-kDa transmembrane glycoprotein that is a member of the epidermal growth factor (EGF) receptor family of receptor tyrosine kinases. It has no ligand binding domain of its own and therefore cannot bind growth factors. However, it does bind tightly to other ligand-bound EGF receptor family members to form a heterodimer, stabilizing ligand binding and enhancing kinase-mediated activation of downstream signalling pathways, such as those involving mitogen-activated protein kinase and phosphatidylinositol-3 kinase. Amplification and/or overexpression of HER2 have been reported in numerous cancers, including breast and ovarian tumors. HER2 is a therapeutic target for the treatment of breast cancer and other carcinomas.

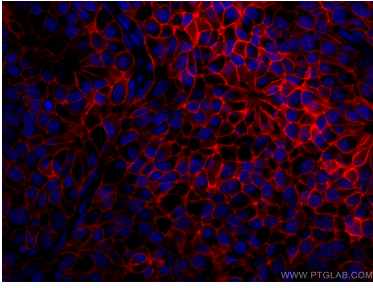
Storage

Storage:
Store at -20°C. Avoid exposure to light. Stable for one year after shipment.
Storage Buffer:
PBS with 50% Glycerol, 0.05% Proclin300, 0.5% BSA, pH 7.3.
Aliquoting is unnecessary for -20°C storage

For technical support and original validation data for this product please contact:
T: 1 (888) 4PTGLAB (1-888-478-4522) (toll free in USA), or 1(312) 455-8498 (outside USA)
E: proteintech@ptglab.com
W: ptglab.com

This product is exclusively available under Proteintech Group brand and is not available to purchase from any other manufacturer.

Selected Validation Data



Immunofluorescent analysis of (4% PFA) fixed human breast cancer tissue using CoraLite®594 HER2/ErbB2 antibody (CL594-60311, Clone: 1B12A7) at dilution of 1:100.