

For Research Use Only

# CoraLite®594-conjugated c-SRC Monoclonal antibody

Catalog Number: CL594-60315

1 Publications



## Basic Information

Catalog Number:

CL594-60315

Size:

100ul , Concentration: 1000 ug/ml by Nanodrop;

Source:

Mouse

Isotype:

IgG2b

Immunogen Catalog Number:

AG22306

GenBank Accession Number:

BC011566

GeneID (NCBI):

6714

ENSEMBL Gene ID:

ENSG00000197122

UNIPROT ID:

P12931

Full Name:

v-src sarcoma (Schmidt-Ruppin A-2) viral oncogene homolog (avian)

Calculated MW:

60 kDa

Observed MW:

60 kDa

Purification Method:

Protein A purification

CloneNo.:

5E10C4

Recommended Dilutions:

IF/ICC 1:50-1:500

Excitation/Emission maxima wavelengths:

588 nm / 604 nm

## Applications

Tested Applications:

IF/ICC, FC (Intra)

Cited Applications:

IF

Species Specificity:

human, mouse, hamster

Cited Species:

human

Positive Controls:

IF/ICC : MCF-7 cells,

## Background Information

SRC, also named as SRC1 and p60-Src, belongs to the protein kinase superfamily, Tyr protein kinase family and SRC subfamily. It is a non-receptor protein tyrosine kinase that plays pivotal roles in numerous cellular processes such as proliferation, migration, and transformation. In concert with PTK2B, SRC plays an important role in osteoclastic bone resorption. It promotes energy production in osteoclasts by activating mitochondrial cytochrome C oxidase.

## Notable Publications

Author	Pubmed ID	Journal	Application
Zhenzhen Pan	35303882	Mol Cancer	IF

## Storage

Storage:

Store at -20°C. Avoid exposure to light. Stable for one year after shipment.

Storage Buffer:

PBS with 50% Glycerol, 0.05% Proclin300, 0.5% BSA, pH 7.3.

Aliquoting is unnecessary for -20°C storage

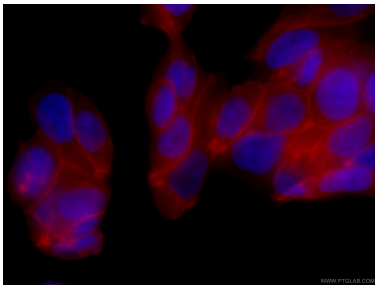
For technical support and original validation data for this product please contact:

T: 1 (888) 4PTGLAB (1-888-478-4522) (toll free in USA), or 1(312) 455-8498 (outside USA)

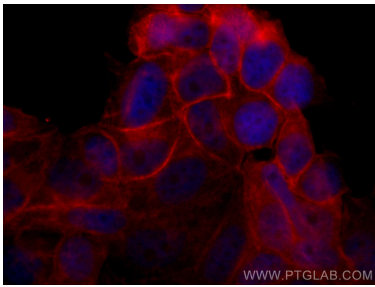
E: [proteintech@ptglab.com](mailto:proteintech@ptglab.com)  
W: [ptglab.com](http://ptglab.com)

This product is exclusively available under Proteintech Group brand and is not available to purchase from any other manufacturer.

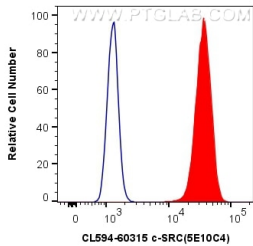
Selected Validation Data



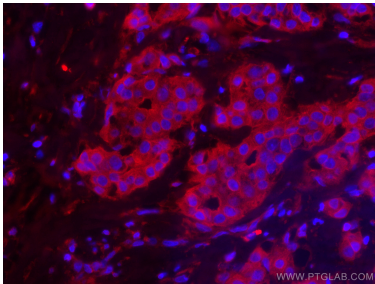
Immunofluorescent analysis of (4% PFA) fixed MCF-7 cells using CL594-60315 (c-SRC antibody) at dilution of 1:100.



Immunofluorescent analysis of (4% PFA) fixed MCF-7 cells using CoraLite® 594 c-SRC antibody (CL594-60315, Clone: 5E10C4) at dilution of 1:200.



1X10<sup>6</sup> MCF-7 cells were intracellularly stained with 0.4 ug CoraLite® 594 Anti-Human c-SRC (CL594-60315, Clone:5E10C4) (red), or 0.4 ug Mouse IgG2b Isotype Control (CL594-66360-3, Clone: K11B8C4B5) (blue). Cells were fixed with 4% PFA and permeabilized with Flow Cytometry Perm Buffer (PF00011-C).



Immunofluorescent analysis of (4% PFA) fixed human breast cancer tissue using CoraLite® 594-conjugated c-SRC antibody (CL594-60315, Clone: 5E10C4) at dilution of 1:100.



Immunofluorescent analysis of (4% PFA) fixed MCF-7 cells using CoraLite® 594 c-SRC antibody (CL594-60315, Clone: 5E10C4) at dilution of 1:100.