

For Research Use Only

CoraLite®594 Anti-Mouse CD107a / LAMP1 (1D4B)



Catalog Number:CL594-65050

Basic Information

Catalog Number: CL594-65050	GenBank Accession Number: BC006785	Purification Method: Affinity purification
Size: 100tests , 5 µl/test	GeneID (NCBI): 16783	CloneNo.: 1D4B
Source: Rat	Full Name: lysosomal-associated membrane protein 1	Recommended Dilutions: IF 1:50-1:500
Isotype: IgG2a, kappa		Excitation/Emission maxima wavelengths: 593 nm / 614 nm

Applications

Tested Applications: FC (Intra), IF	Positive Controls: IF : NIH/3T3 cells,
Species Specificity: Mouse	

Background Information

LAMP1 (CD107a) is a heavily glycosylated membrane protein enriched in the lysosomal membrane. LAMP1 is extensively glycosylated with asparagine-linked oligosaccharides which protect it from intracellular proteolysis (PMID: 10521503). Although LAMP1 is expressed largely in the endosome-lysosomal membrane of cells, it is also found on the plasma membrane (PMID: 16168398). Elevated LAMP1 expression at the cell surface has also been detected during platelet and granulocytic cell activation, as well as in some tumor cells (PMID: 29085473). LAMP1 functions to provide selectins with carbohydrate ligands. This protein has also been shown to be a marker of degranulation on lymphocytes such as CD8+ and NK cells and may also play a role in tumor cell differentiation and metastasis (PMID: 18835598; 29085473; 9426697).

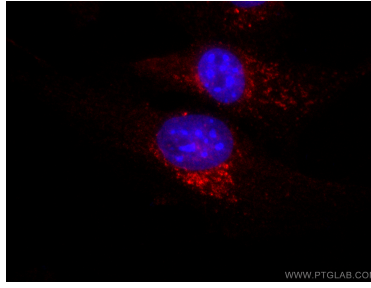
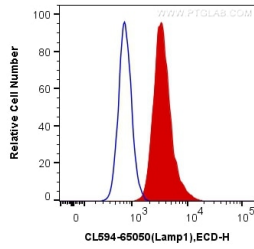
Storage

Storage:
Store at 2-8°C. Avoid exposure to light. Stable for one year after shipment.
Storage Buffer:
PBS with 0.1% sodium azide and 0.5% BSA, pH 7.3.

For technical support and original validation data for this product please contact:
T: 1 (888) 4PTGLAB (1-888-478-4522) (toll free in USA), or 1(312) 455-8498 (outside USA) E: proteintech@ptglab.com
W: ptglab.com

This product is exclusively available under Proteintech Group brand and is not available to purchase from any other manufacturer.

Selected Validation Data



1X10⁶ NIH/3T3 cells were intracellularly stained with 5 ul CoraLite®594 Anti-Mouse CD107a (CL594-65050, Clone:1D4B) (red), or Control Antibody. Cells were fixed with 4% PFA and permeabilized with 0.1% TritonX-100.

Immunofluorescent analysis of (4% PFA) fixed NIH/3T3 cells using CoraLite®594 CD107a antibody (CL594-65050, Clone: 1D4B) at dilution of 1:100.