

For Research Use Only

CoraLite®594 Anti-Mouse Ly-6G (1A8)



Catalog Number: **CL594-65078**

Basic Information

Catalog Number: CL594-65078	GenBank Accession Number: X70920	Purification Method: Affinity purification
Size: 100ug, 0.5 mg/ml	GeneID (NCBI): 546644	CloneNo.: 1A8
Source: Rat	Full Name: lymphocyte antigen 6 complex, locus G	Excitation/Emission maxima wavelengths: 588 nm / 604 nm
Isotype: IgG2a, kappa		

Applications

Tested Applications:
FC

Species Specificity:
Mouse

Background Information

Ly-6G (lymphocyte antigen 6 complex, locus G), also known as Gr-1, is a 21-25 kDa, glycosylphosphatidylinositol-anchored protein expressed on myeloid lineage cells in mouse bone marrow (PMID: 8360469). The expression of Ly-6G increases on neutrophils as they differentiate from immature cells in the bone marrow to mature cells in the blood and spleen (PMID: 8890901). Antibodies targeting Ly6G (RB6-8C5 or 1A8) are commonly used in studies aimed at identifying the role of neutrophils (PMID: 23543767). The 1A8 mAb is specific for Ly-6G (PMID: 8360469).

Storage

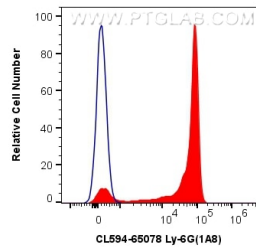
Storage:
Store at 2-8°C. Avoid exposure to light. Stable for one year after shipment.

Storage Buffer:
PBS with 0.09% sodium azide.

For technical support and original validation data for this product please contact:
T: 1 (888) 4PTGLAB (1-888-478-4522) (toll free in USA), or 1(312) 455-8498 (outside USA) E: proteintech@ptglab.com W: ptglab.com

This product is exclusively available under Proteintech Group brand and is not available to purchase from any other manufacturer.

Selected Validation Data



1X10⁶ mouse bone marrow cells were surface stained with 0.5 ug CoraLite® 594 Anti-Mouse Ly-6G (CL594-65078, Clone:1A8) (red), or 0.5 ug Isotype Control. Cells were not fixed.