

For Research Use Only

CoraLite® Plus 594 Anti-Human CD20 (2H7)



Catalog Number: CL594-65085

Basic Information

Catalog Number: CL594-65085	GenBank Accession Number: BC002807	Purification Method: Affinity purification
Size: 100tests , 5 µl/test	GeneID (NCBI): 931	CloneNo.: 2H7
Source: Mouse	Full Name: membrane-spanning 4-domains, subfamily A, member 1	Excitation/Emission maxima wavelengths: 594 nm / 615 nm
IsoType: IgG2b, kappa	Calculated MW: 297 aa, 33 kDa	

Applications

Tested Applications:
FC

Species Specificity:
Human

Background Information

CD20 is a 33-37 kDa transmembrane phosphoprotein belonging to the membrane-spanning 4A family (PMID: 3260267; 16785532). CD20 is a B-lymphocyte surface molecule that is widely expressed during B-cell ontogeny, from early pre-B-cell developmental stages until final differentiation into plasma cells (PMID: 7524522). CD20 functions as calcium-permeable cation channel (PMID: 7684739). It is involved in the regulation of B-cell activation, proliferation and differentiation (PMID: 7524522).

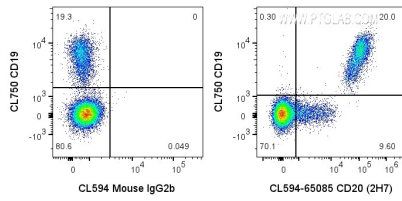
Storage

Storage:
Store at 2-8°C. Avoid exposure to light. Stable for one year after shipment.
Storage Buffer:
PBS with 0.09% sodium azide and 0.5% BSA.

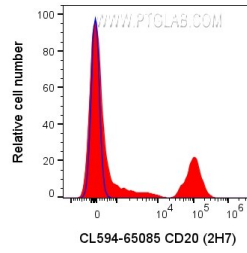
For technical support and original validation data for this product please contact:
T: 1 (888) 4PTGLAB (1-888-478-4522) (toll free in USA), or 1(312) 455-8498 (outside USA)
E: proteintech@ptglab.com
W: ptglab.com

This product is exclusively available under Proteintech Group brand and is not available to purchase from any other manufacturer.

Selected Validation Data



1X10⁶ human PBMCs were surface stained with CL750 CD19 and 5 ul CoraLite® Plus 594 Anti-Human CD20 (CL594-65085, Clone:2H7) or CoraLite®594 Mouse IgG2b Isotype Control. Cells were not fixed. Lymphocytes were gated.



1X10⁶ human PBMCs were surface stained with 5 ul CoraLite® Plus 594 Anti-Human CD20 (CL594-65085, Clone:2H7) or CoraLite®594 Mouse IgG2b Isotype Control. Cells were not fixed. Lymphocytes were gated.