

For Research Use Only

# CoraLite®594 Anti-Mouse FcεR1α (MAR-1)

Catalog Number: CL594-65091



## Basic Information

Catalog Number:

CL594-65091

Size:

100ug , 500 µg/ml

Source:

Armenian Hamster

Isotype:

IgG

GenBank Accession Number:

BC125455

GeneID (NCBI):

14125

Full Name:

Fc receptor, IgE, high affinity I, alpha polypeptide

Purification Method:

Affinity purification

CloneNo.:

MAR-1

Excitation/Emission maxima wavelengths:

588 nm / 604 nm

## Applications

Tested Applications:

FC

Species Specificity:

mouse

## Background Information

Fc epsilon Receptor I alpha (FcεR1α) is a single-pass type I membrane protein that contains 2 immunoglobulin-like domains. FcεR1α forms a tetrameric complex, FcεRI, with one beta and two gamma subunits (PMID: 19406478). FcεRI is the high-affinity receptor for the Fc region of immunoglobulin E (IgE) (PMID: 1532373). It is expressed on mast cells and basophils and plays a central role in the allergic response (PMID: 2148316).

## Storage

Storage:

Store at 2-8°C. Avoid exposure to light. Stable for one year after shipment.

Storage Buffer:

PBS with 0.09% sodium azide.

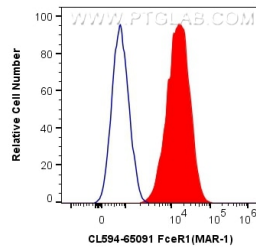
For technical support and original validation data for this product please contact:

T: 1 (888) 4PTGLAB (1-888-478-4522) (toll free in USA), or 1(312) 455-8498 (outside USA)

E: [proteintech@ptglab.com](mailto:proteintech@ptglab.com)  
W: [ptglab.com](http://ptglab.com)

This product is exclusively available under Proteintech Group brand and is not available to purchase from any other manufacturer.

## Selected Validation Data



1X10<sup>6</sup> MC/9 cells were surface stained with 0.5 ug CoraLite®594 Anti-Mouse FcεR1 (CL594-65091, Clone:MAR-1) (red), or 0.5 ug Isotype Control. Cells were not fixed.