

For Research Use Only

# CoraLite® Plus 594 Anti-Human CD4 (RPA-T4)



Catalog Number: **CL594-65143**

## Basic Information

### Catalog Number:

CL594-65143

### Size:

100 tests, 5 ul/test

### Source:

Mouse

### Isotype:

IgG1, kappa

### GenBank Accession Number:

BC025782

### GeneID (NCBI):

920

### ENSEMBL Gene ID:

ENSG00000010610

### UNIPROT ID:

P01730

### Full Name:

CD4 molecule

### Calculated MW:

55 kDa

### Purification Method:

Affinity purification

### CloneNo.:

RPA-T4

### Excitation/Emission maxima wavelengths:

594 nm / 615 nm

## Applications

### Tested Applications:

FC

### Species Specificity:

Human

## Background Information

CD4 is a 55-kDa transmembrane glycoprotein expressed on T helper cells, majority of thymocytes, monocytes, macrophages, and dendritic cells (PMID: 9304802; 12213222). CD4 is an accessory protein for MHC class-II antigen/T-cell receptor interaction. It plays an important role in T helper cell development and activation (PMID: 9539765; 3112582). CD4 serves as a receptor for the human immunodeficiency virus (HIV) (PMID: 9304802).

## Storage

### Storage:

Store at 2-8°C. Avoid exposure to light. Stable for one year after shipment.

### Storage Buffer:

PBS with 0.09% sodium azide and 0.5% BSA.

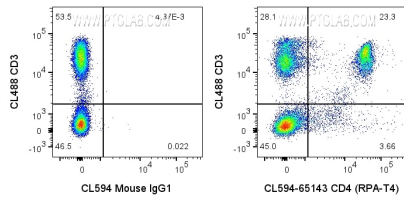
For technical support and original validation data for this product please contact:

T: 1 (888) 4PTGLAB (1-888-478-4522) (toll free in USA), or 1(312) 455-8498 (outside USA)

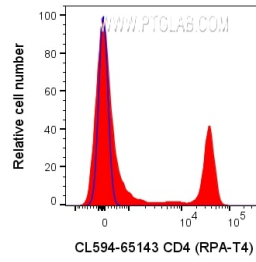
E: [proteintech@ptglab.com](mailto:proteintech@ptglab.com)  
W: [ptglab.com](http://ptglab.com)

This product is exclusively available under Proteintech Group brand and is not available to purchase from any other manufacturer.

## Selected Validation Data



1x10<sup>6</sup> human PBMCs were surface stained with 5 ul CoraLite® Plus 594 Anti-Human CD4 (CL594-65143, Clone:RPA-T4) or CoraLite® 594 Mouse IgG1 Isotype Control, and CL488-conjugated Anti-Human CD3. Cells were not fixed. Lymphocytes were gated.



1x10<sup>6</sup> human PBMCs were surface stained with 5 ul CoraLite® Plus 594 Anti-Human CD4 (CL594-65143, Clone:RPA-T4) or CoraLite® 594 Mouse IgG1 Isotype Control. Cells were not fixed. Lymphocytes were gated.