

For Research Use Only

CoraLite® Plus 594 Anti-Human CD163 (GHI/61)

Catalog Number: CL594-65169



Basic Information

Catalog Number:

CL594-65169

Size:

100 tests, 5 ul/test

Source:

Mouse

Isotype:

IgG1, kappa

GenBank Accession Number:

BC051281

GeneID (NCBI):

9332

ENSEMBL Gene ID:

ENSG00000177575

UNIPROT ID:

Q86VB7

Full Name:

CD163 molecule

Calculated MW:

1156 aa, 125 kDa

Purification Method:

Protein G purification

CloneNo.:

GHI/61

Excitation/Emission maxima wavelengths:

594 nm / 615 nm

Applications

Tested Applications:

FC

Species Specificity:

human

Background Information

CD163, also known as M130, is a membrane glycoprotein which belongs to the scavenger receptor superfamily (PMID: 8370408). It is an acute phase-regulated and signal-inducing macrophage protein expressed exclusively in monocytes and tissue macrophages (PMID: 11196644). CD163 mediates endocytosis of haptoglobin-haemoglobin complexes (PMID: 11196644). The uptake of haptoglobin by macrophages contributes to the recycling of iron and also to the inflammatory response (PMID: 22900885). Soluble CD163 (sCD163), as a result of ectodomain shedding during inflammatory activation of macrophages, circulates in blood and has been suggested as a plasma/serum marker for macrophage activity (PMID: 12570164).

Storage

Storage:

Store at 2-8°C. Avoid exposure to light. Stable for one year after shipment.

Storage Buffer:

PBS with 0.09% sodium azide and 0.5% BSA, pH7.3

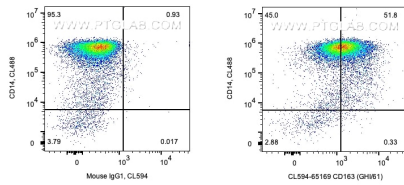
For technical support and original validation data for this product please contact:

T: 1 (888) 4PTGLAB (1-888-478-4522) (toll free in USA), or 1(312) 455-8498 (outside USA)

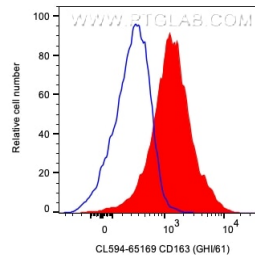
E: proteintech@ptglab.com
W: ptglab.com

This product is exclusively available under Proteintech Group brand and is not available to purchase from any other manufacturer.

Selected Validation Data



1x10⁶ human PBMCs were surface stained with CL488 Anti-Human CD14 (CL488-65246) and 5 ul CoraLite®594 Anti-Human CD163 (CL594-65169, Clone:GH1/61) or CoraLite®594 Mouse IgG1 Isotype Control (CL594-65124, Clone: MÖPC-21). Cells were not fixed. Cells were treated with FC Receptor Block prior to staining. Monocytes were gated.



1x10⁶ human PBMCs were surface stained with 5 ul CoraLite®594 Anti-Human CD163 (CL594-65169, Clone:GH1/61) or CoraLite®594 Mouse IgG1 Isotype Control (CL594-65124, Clone: MÖPC-21). Cells were not fixed. Cells were treated with FC Receptor Block prior to staining. Monocytes were gated.