

For Research Use Only

CoraLite®594 Anti-Human CD2 (TS1/8)



Catalog Number: **CL594-65192**

Basic Information

Catalog Number: CL594-65192	GenBank Accession Number: BC033583	Purification Method: Protein G purification
Size: 100tests , 5 µl/test	GeneID (NCBI): 914	CloneNo.: TS1/8
Source: Mouse	Full Name: CD2 molecule	Excitation/Emission maxima wavelengths: 593 nm / 614 nm
Isotype: Mouse IgG1, kappa	Calculated MW: 351 aa, 39 kDa	

Applications

Tested Applications:
FC

Species Specificity:
Human

Background Information

CD2 is a cell surface glycoprotein present on a majority of thymocytes, all mature T cells and subset of NK cells but not on B lymphocytes. It is a pan T-cell marker. CD2 interacts with lymphocyte function-associated antigen (LFA-3/CD58) and CD48/BCM1 to mediate adhesion between T-cells and other cell types. CD2 is implicated in the triggering of T-cells, the cytoplasmic domain is implicated in the signaling function.

Storage

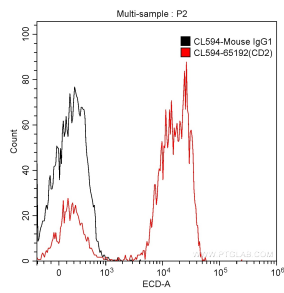
Storage:
Store at 2-8°C. Avoid exposure to light.

Storage Buffer:
PBS with 0.1% sodium azide and 0.5% BSA, pH 7.3.

For technical support and original validation data for this product please contact:
T: 1 (888) 4PTGLAB (1-888-478-4522) (toll free in USA), or 1(312) 455-8498 (outside USA)
E: proteintech@ptglab.com
W: ptglab.com

This product is exclusively available under Proteintech Group brand and is not available to purchase from any other manufacturer.

Selected Validation Data



1X10⁶ human peripheral blood lymphocytes were surface stained with 5 ul CoraLite®594-conjugated Anti-Human CD2 (CL594-65192, Clone: TS1/8) (red) or isotype control antibody (black). Cells were not fixed.