

For Research Use Only

# CoraLite® Plus 594 Mouse IgM Isotype Control (MOPC-104E)

Catalog Number: CL594-65243



## Basic Information

Catalog Number:

CL594-65243

Size:

100ug, 0.2 mg/ml

Source:

Mouse

Isotype:

IgM, lambda

GenBank Accession Number:

GeneID (NCBI):

Full Name:

Purification Method:

Affinity purification

CloneNo.:

MOPC-104E

Excitation/Emission maxima wavelengths:

594 nm / 615 nm

## Applications

Tested Applications:

FC

Species Specificity:

n/a

## Background Information

The MOPC-104E immunoglobulin is useful as an isotype-matched control for mouse IgM antibodies. B1355S dextran, nigerosyl-alpha (1-3)-nigerose, and nigerosyl-alpha (1-3)-glucose have abilities to bind to MOPC-104E immunoglobulin (PMID: 6165777). This antibody has been quality-tested for flow cytometry as negative control.

## Storage

Storage:

Store at 2-8°C. Avoid exposure to light. Stable for one year after shipment.

Storage Buffer:

PBS with 0.09% sodium azide and 0.5% BSA.

For technical support and original validation data for this product please contact:

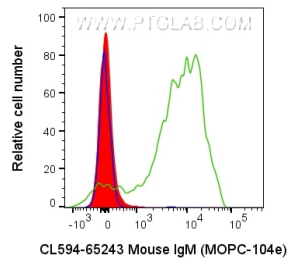
T: 1 (888) 4PTGLAB (1-888-478-4522) (toll free in USA), or 1(312) 455-8498 (outside USA)

E: [proteintech@ptglab.com](mailto:proteintech@ptglab.com)

W: [ptglab.com](http://ptglab.com)

This product is exclusively available under Proteintech Group brand and is not available to purchase from any other manufacturer.

## Selected Validation Data



100ul human platelet-rich plasma (diluted 1:2 in PBS) was surface stained with 0.2 ug CoraLite® Plus 594 Mouse IgM Isotype Control (CL594-65243, Clone: MOPC-104E) (red), or CL594 Anti-Human CD36 (CL594-65248) (green), or unstained (blue). Cells were not fixed.