

For Research Use Only



CoraLite® Plus 594 Anti-Human CD64 (10.1) Mouse IgG2a Recombinant Antibody

Catalog Number: ~~CL594-65572~~

Basic Information

Catalog Number:	GenBank Accession Number:	Purification Method:
CL594-65572	BC032634	Protein A purification
Size:	GeneID (NCBI):	CloneNo.:
100tests , 5 ul/test	2209	10.1
Source:	ENSEMBL Gene ID:	Excitation/Emission maxima wavelengths:
Mouse	ENSG00000150337	594 nm / 615 nm
Isotype:	Full Name:	
IgG2a	Fc fragment of IgG, high affinity Ia, receptor (CD64)	
	Calculated MW:	
	374 aa, 43 kDa	

Applications

Tested Applications:
FC
Species Specificity:
human

Background Information

Fcγ receptor comprise a multigene family of integral membrane glycoproteins that exhibit complex activation or inhibitory effects on cell functions after aggregation by complexed immunoglobulin G (IgG) (PMID: 17005690). CD64, also known as Fcγ R1A, is a high-affinity receptor for the Fc region of IgG. It is expressed by monocytes/macrophages, activated neutrophils, dendritic cells, and early myeloid cells (PMID: 23293080; 19642859; 7680917). CD64 functions in both innate and adaptive immune responses.

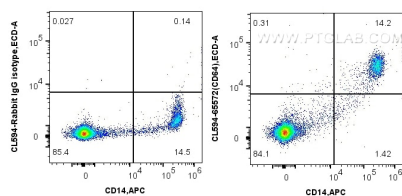
Storage

Storage:
Store at 2-8°C. Avoid exposure to light.
Storage Buffer:
PBS with 0.09% sodium azide and 0.5% BSA.

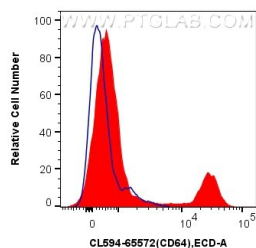
For technical support and original validation data for this product please contact:
T: 1 (888) 4PTGLAB (1-888-478-4522) (toll free in USA), or 1(312) 455-8498 (outside USA)
E: proteintech@ptglab.com
W: ptglab.com

This product is exclusively available under Proteintech Group brand and is not available to purchase from any other manufacturer.

Selected Validation Data



1x10⁶ human PBMCs were surface stained with APC Anti-Human CD14 (26IC) and 5 ul CoraLite® Plus 594 Anti-Human CD64 (10.1) Mouse IgG2a Recombinant Antibody (CL594-65572, Clone: 10.1) or Isotype Control. Cells were not fixed.



1x10⁶ human PBMCs were stained with 5 ul CoraLite® Plus 594 Anti-Human CD64 (10.1) Mouse IgG2a Recombinant Antibody (CL594-65572, Clone:10.1) (red), or Isotype Control (blue). Cells were not fixed.