

For Research Use Only



CoraLite®594 Anti-Human CD226 (11A8) Mouse IgG2a Recombinant Antibody

Catalog Number: **CL594-65573**

Basic Information

Catalog Number:

CL594-65573

Size:

100 tests, 5 ul/test

Source:

Mouse

Isotype:

IgG2a

GenBank Accession Number:

BC074787

GeneID (NCBI):

10666

ENSEMBL Gene ID:

ENSG00000150637

Full Name:

CD226 molecule

Calculated MW:

336 aa, 39 kDa

Purification Method:

Protein A purification

CloneNo.:

11A8

Excitation/Emission maxima

wavelengths:

588 nm / 604 nm

Applications

Tested Applications:

FC

Species Specificity:

human

Background Information

CD226 (DNAM-1) is a ~65 kDa glycoprotein expressed on the surface of NK cells, platelets, monocytes and a subset of T cells. It is a member of the Ig-superfamily containing 2 Ig-like domains of the V-set. CD226 mediates cellular adhesion of platelets and megakaryocytic cells to vascular endothelial cells. The protein also plays a role in megakaryocytic cell maturation. Interactions of CD226 and its ligands, CD155 and CD112, induce NK and T cell-mediated cytotoxicity and cytokine secretion (PMID: 15039383).

Storage

Storage:

Store at 2-8°C. Avoid exposure to light. Stable for one year after shipment.

Storage Buffer:

PBS with 0.09% sodium azide and 0.5% BSA.

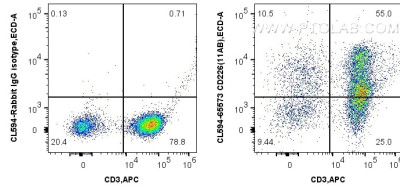
For technical support and original validation data for this product please contact:

T: 1 (888) 4PTGLAB (1-888-478-4522) (toll free in USA), or 1(312) 455-8498 (outside USA)

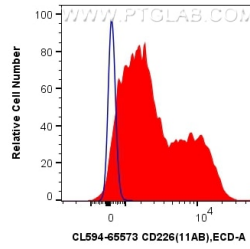
E: proteintech@ptglab.com
W: ptglab.com

This product is exclusively available under Proteintech Group brand and is not available to purchase from any other manufacturer.

Selected Validation Data



1x10⁶ human PBMCs were surface stained with APC Anti-Human CD3 and 5 ul CoraLite® Plus 594 Anti-Human CD226 (11A8) Mouse IgG2a Recombinant Antibody (CL594-65573, Clone: 11A8) (right), or CoraLite® Plus 750 Mouse IgG2a Isotype Control (C1.18.4) (CL750-65208, Clone: C1.18.4) (left). Cells were not fixed.



1x10⁶ human PBMCs were surface stained with 5 ul CoraLite® Plus 594 Anti-Human CD226 (11A8) Mouse IgG2a Recombinant Antibody (CL594-65573, Clone: 11A8) (red) or Isotype Control (blue). Cells were not fixed.