

CoraLite®594 Anti-Human CD11b (ICRF44) Mouse IgG2a Recombinant Antibody

Catalog Number: **CL594-65582**

Basic Information

| | | |
|--------------------------------|--|---|
| Catalog Number: CL594-65582 | GenBank Accession Number: BC096346 | Purification Method: Protein A purification |
| Size: 100tests , 5 µl/test | GeneID (NCBI): 3684 | CloneNo.: ICRF44 |
| Source: Mouse | ENSEMBL Gene ID: ENSG00000169896 | Excitation/Emission maxima wavelengths: 588 nm / 604 nm |
| Isotype: IgG2a | Full Name: integrin, alpha M (complement component 3 receptor 3 subunit) | |
| | Calculated MW: 1152 aa, 127 kDa | |

Applications

Tested Applications:
FC

Species Specificity:
human

Background Information

Integrins are cell adhesion receptors that are heterodimers composed of non-covalently associated α and β subunits (PMID: 9779984). CD11b, also known as Integrin alpha M or CR3A, belongs to the integrin alpha chain family. CD11b forms an α/β heterodimer with CD18 (integrin β 2). CD11b/CD18 is implicated in various adhesive interactions of monocytes, macrophages and granulocytes as well as in mediating the uptake of complement-coated particles and pathogens (PMID: 9558116; 20008295). CD11b/CD18 is a receptor for the complement protein fragment iC3b, and is also a receptor for fibrinogen, factor X and ICAM1 (PMID: 2971974; 15485828).

Storage

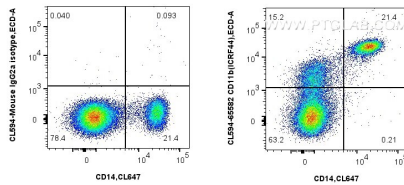
Storage:
Store at 2-8°C. Avoid exposure to light.

Storage Buffer:
PBS with 0.09% sodium azide and 0.5% BSA.

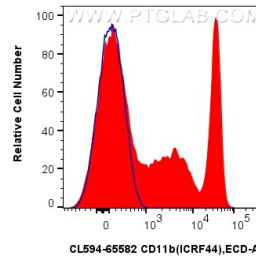
For technical support and original validation data for this product please contact:
T: 1 (888) 4PTGLAB (1-888-478-4522) (toll free in USA), or 1(312) 455-8498 (outside USA)
E: proteintech@ptglab.com
W: ptglab.com

This product is exclusively available under Proteintech Group brand and is not available to purchase from any other manufacturer.

Selected Validation Data



1x10⁶ human PBMCs were surface stained with CoraLite® Plus 647 Anti-Human CD14, and 5 ul CoraLite® 594 Anti-Human CD11b (ICRF44) Mouse IgG2a Recombinant Antibody (CL594-65582, Clone: ICRF44) (right), or CoraLite® 594 Mouse IgG2a Isotype Control (C1.18.4) (CL594-65208, Clone: C1.18.4) (left). Cells were incubated with FC Receptor Block prior to staining. Cells were not fixed.



1x10⁶ human PBMCs were surface stained with 5 ul CoraLite® 594 Anti-Human CD11b (ICRF44) Mouse IgG2a Recombinant Antibody (CL594-65582, Clone: ICRF44)(red), or CoraLite® 594 Mouse IgG2a Isotype Control (C1.18.4) (CL594-65208, Clone: C1.18.4) (blue). Cells were incubated with FC Receptor Block prior to staining. Cells were not fixed.