

For Research Use Only

CoraLite®594 Anti-Human ALCAM (3A6) Mouse IgG2a Recombinant Antibody

Catalog Number: CL594-65611



Basic Information

Catalog Number:

CL594-65611

Size:

100 tests, 5 ul/test

Source:

Mouse

Isotype:

IgG2a

GenBank Accession Number:

BC057809

GeneID (NCBI):

214

Full Name:

activated leukocyte cell adhesion molecule

Calculated MW:

105 kDa

Purification Method:

Protein A purification

CloneNo.:

3A6

Excitation/Emission maxima wavelengths:

588 nm / 604 nm

Applications

Tested Applications:

FC

Species Specificity:

human

Background Information

Activated leukocyte cell adhesion molecule (ALCAM, also known as CD166) is a cell adhesion molecule that belongs to the immunoglobulin superfamily. It is involved in cell-cell adhesion through homophilic and heterophilic (to CD6) interactions. ALCAM is widely expressed in a variety of normal tissues and cell types, including activated T cells and monocytes, epithelial cells, fibroblasts, neuronal cells, hepatocytes, and bone marrow mesenchymal stem cells (PMID: 7760007; 25221999). Altered ALCAM expression has been associated with the differentiation state and progression in some neoplasms including melanoma, prostate, colorectal, and breast cancers (PMID: 20461761; 18172759).

Storage

Storage:

Store at 2-8°C. Avoid exposure to light. Stable for one year after shipment.

Storage Buffer:

PBS with 0.09% sodium azide and 0.5% BSA.

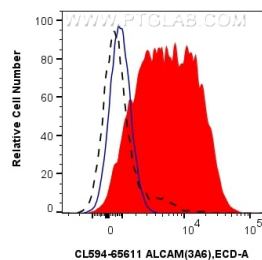
For technical support and original validation data for this product please contact:

T: 1 (888) 4PTGLAB (1-888-478-4522) (toll free in USA), or 1(312) 455-8498 (outside USA)

E: proteintech@ptglab.com
W: ptglab.com

This product is exclusively available under Proteintech Group brand and is not available to purchase from any other manufacturer.

Selected Validation Data



1×10^6 PHA treated human PBMCs were surface stained with 5 μ l CoraLite®594 Anti-Human ALCAM Mouse IgG2a Recombinant Antibody (CL594-65611, Clone: 3A6) (red) or CoraLite®594 Mouse IgG2a Isotype Control (CL594-65208, Clone: C1.18.4) (blue). 1×10^6 untreated human PBMCs were surface stained with 5 μ l CoraLite®594 Anti-Human ALCAM Mouse IgG2a Recombinant Antibody (CL594-65611, Clone: 3A6) (black, dashed). Cells were not fixed.