

For Research Use Only

CoraLite®594 Anti-Mouse CD4 (GK1.5) Rat IgG2a Recombinant Antibody

Catalog Number:CL594-65662



Basic Information

Catalog Number:

CL594-65662

Size:

100ug , 500 ug/ml

Source:

Rat

Isotype:

IgG2a

GenBank Accession Number:

BC039137

GeneID (NCBI):

12504

UNIPROT ID:

P06332

Full Name:

CD4 antigen

Purification Method:

Protein G purification

CloneNo.:

GK1.5

Recommended Dilutions:

FC: 0.25 ug per 10⁶ cells in a 100 µl suspension

Excitation/Emission maxima wavelengths:

588 nm / 604 nm

Applications

Tested Applications:

FC

Species Specificity:

mouse

Positive Controls:

FC : mouse splenocytes,

Background Information

CD4 is a 55-kDa transmembrane glycoprotein expressed on T helper cells, majority of thymocytes, monocytes, macrophages, and dendritic cells (PMID: 9304802; 12213222). CD4 is an accessory protein for MHC class-II antigen/T-cell receptor interaction. It plays an important role in T helper cell development and activation (PMID: 9539765; 3112582). CD4 serves as a receptor for the human immunodeficiency virus (HIV) (PMID: 9304802).

Storage

Storage:

Store at 2-8°C. Avoid exposure to light. Stable for one year after shipment.

Storage Buffer:

PBS with 0.09% sodium azide, pH7.3

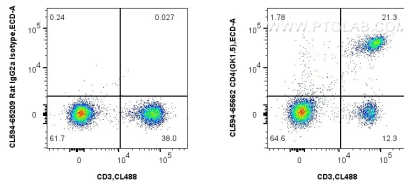
For technical support and original validation data for this product please contact:

T: 1 (888) 4PTGLAB (1-888-478-4522) (toll free in USA), or 1(312) 455-8498 (outside USA)

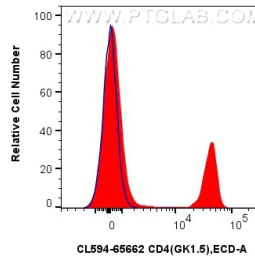
E: proteintech@ptglab.com
W: ptglab.com

This product is exclusively available under Proteintech Group brand and is not available to purchase from any other manufacturer.

Selected Validation Data



1x10⁶ mouse splenocytes were surface stained with FcZero-rAb™ CoraLite® Plus 488 Anti-Mouse CD3e, and 0.25 ug CoraLite®594 Anti-Mouse CD4 (GK1.5) Rat IgG2a RecAb (CL594-65662, Clone:GK1.5) or CoraLite®594 Rat IgG2a Isotype Control (2A3) (CL594-65209, Clone: 2A3). Cells were not fixed.



1x10⁶ mouse splenocytes were surface stained with 0.25 ug CoraLite®594 Anti-Mouse CD4 (GK1.5) Rat IgG2a RecAb (CL594-65662, Clone: GK1.5) (red) or CoraLite®594 Rat IgG2a Isotype Control (2A3) (CL594-65209, Clone: 2A3) (blue). Cells were not fixed.