

For Research Use Only

CoraLite®594-conjugated GFP tag Monoclonal antibody

Catalog Number:CL594-66002



Basic Information

Catalog Number:

CL594-66002

GenBank Accession Number:

M62653

Purification Method:

Protein A purification

Size:

100ul , Concentration: 1000 ug/ml by
Nanodrop;

GeneID (NCBI):

Full Name:

CloneNo.:

1E10H7

Source:

Mouse

Calculated MW:

26 kDa

Recommended Dilutions:

WB 1:2000-1:10000

IF/ICC 1:50-1:500

Isotype:

IgG2a

Excitation/Emission maxima
wavelengths:

588 nm / 604 nm

Immunogen Catalog Number:

AG2128

Applications

Tested Applications:

WB, IF/ICC

Positive Controls:

WB : Recombinant protein,

IF/ICC : Transfected HEK-293 cells,

Species Specificity:

recombinant protein

Background Information

Green Fluorescent Proteins (GFPs) encompass a diverse range of proteins carrying a green chromophore, originating from various species and forming different protein lineages. Wildtype GFP consists of 238 amino acid residues (26.9 kDa). GFP was first identified in the jellyfish *Aequorea victoria*. It emits green light with a peak wavelength of 509 nm upon excitation by blue light at 395 nm. When fused with other proteins, GFP serves as a versatile reporter protein e.g. for quantifying expression levels or facilitates visualization of subcellular localization through fluorescence microscopy. This antibody is a mouse (IgG2a) monoclonal antibody against GFP reactive to GFP, eGFP, eYFP, YFP and CFP. This antibody is labeled with CoraLite Plus 594.

Storage

Storage:

Store at -20°C. Avoid exposure to light. Stable for one year after shipment.

Storage Buffer:

PBS with 50% Glycerol, 0.05% Proclin300, 0.5% BSA, pH 7.3.

Aliquoting is unnecessary for -20°C storage

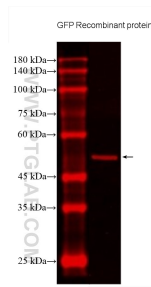
For technical support and original validation data for this product please contact:

T: 1 (888) 4PTGLAB (1-888-478-4522) (toll free
in USA), or 1(312) 455-8498 (outside USA)

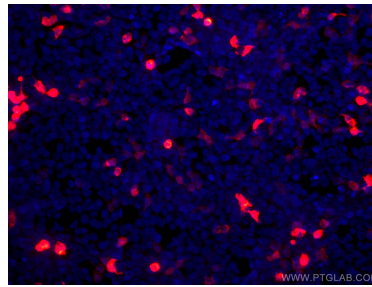
E: proteintech@ptglab.com
W: ptglab.com

This product is exclusively available under Proteintech Group brand and is not available to purchase from any other manufacturer.

Selected Validation Data



Recombinant protein were subjected to SDS PAGE followed by western blot with CL594-66002 (GFP tag antibody) at dilution of 1:5000 incubated at room temperature for 1.5 hours.



Immunofluorescent analysis of (-20°C Ethanol) fixed Transfected HEK-293 cells using CoraLite®594-conjugated GFP tag antibody (CL594-66002, Clone: 1E10H7) at dilution of 1:200.