

For Research Use Only

# CoraLite®594-conjugated Bcl-XL Monoclonal antibody



Catalog Number:CL594-66020

## Basic Information

Catalog Number: CL594-66020	GenBank Accession Number: BC019307	Purification Method: Protein A purification
Size: 100ul , Concentration: 1000 µg/ml by Nanodrop;	GeneID (NCBI): 598	CloneNo.: 4C12A6
Source: Mouse	Full Name: BCL2-like 1	Recommended Dilutions: IF 1:50-1:500
Isotype: IgG2b	Calculated MW: 26 kDa	Excitation/Emission maxima wavelengths: 588 nm / 604 nm
Immunogen Catalog Number: AG18037		

## Applications

Tested Applications: FC (Intra), IF	Positive Controls: IF : HeLa cells, MDCK cells
Species Specificity: human, canine	

## Background Information

BCL2L1 is a member of the BCL-2 protein family. BCL2L1 is expressed as three isoforms, Bcl-X(L), Bcl-X(s) and Bcl-X(beta), and is located at the outer mitochondrial membrane. The Bcl-XL isoform is a 233 amino acid protein, acting as an apoptotic inhibitor. Bcl-XL can form heterodimers with BAX, BAK or BCL2, and the heterodimerization with BAX does not seem to be required for anti-apoptotic activity. The Bcl-XS isoform is a shorter variant that is 178 amino acids in length and lacks a 63 amino acid region (amino acids 126-188), acting as an apoptotic activator.

## Storage

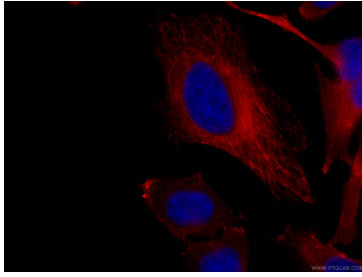
**Storage:**  
Store at -20°C. Avoid exposure to light. Stable for one year after shipment.  
**Storage Buffer:**  
PBS with 50% Glycerol, 0.05% Proclin300, 0.5% BSA, pH 7.3.  
Aliquoting is unnecessary for -20°C storage

\*\*\* 20ul sizes contain 0.1% BSA

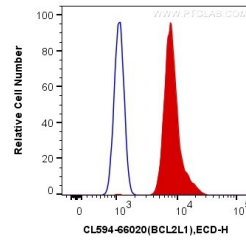
For technical support and original validation data for this product please contact:  
T: 1 (888) 4PTGLAB (1-888-478-4522) (toll free in USA), or 1(312) 455-8498 (outside USA)  
E: [proteintech@ptglab.com](mailto:proteintech@ptglab.com)  
W: [ptglab.com](http://ptglab.com)

This product is exclusively available under Proteintech Group brand and is not available to purchase from any other manufacturer.

## Selected Validation Data



Immunofluorescent analysis of (4% PFA) fixed HeLa cells using CL594-66020 (Bcl-XL antibody) at dilution of 1:100.



1X10<sup>6</sup> HeLa cells were intracellularly stained with 0.4 ug CoraLite®594 Anti-Human Bcl-XL (CL594-66020, Clone:4C12A6) (red), or 0.4 ug Control Antibody. Cells were fixed and permeabilized with Transcription Factor Staining Buffer Kit (PF00011).