

For Research Use Only

# CoraLite®594-conjugated Annexin A2 Monoclonal antibody

Catalog Number: CL594-66035

Featured Product



## Basic Information

Catalog Number:

CL594-66035

Size:

100ul , Concentration: 1000 µg/ml by 302

Nanodrop;

Source:

Mouse

Isotype:

IgG2a

Immunogen Catalog Number:

AG16654

GenBank Accession Number:

BC016774

GeneID (NCBI):

302

ENSEMBL Gene ID:

ENSG00000182718

UNIPROT ID:

P07355

Full Name:

annexin A2

Calculated MW:

339 aa, 39 kDa

Purification Method:

Protein A purification

CloneNo.:

1C1E12

Recommended Dilutions:

IF/ICC 1:300-1:1200

Excitation/Emission maxima wavelengths:

588 nm / 604 nm

## Applications

Tested Applications:

IF/ICC

Species Specificity:

human

Positive Controls:

IF/ICC : T-47D cells,

## Background Information

Annexin A2 (ANXA2), also named Annexin-2 or Lipocortin II, is a Ca<sup>2+</sup> binding protein that is up-regulated in virally transformed cell lines and human tumors. This calcium-regulated membrane-binding protein, whose affinity for calcium is greatly enhanced by anionic phospholipids, may cross-link plasma membrane phospholipids with actin and the cytoskeleton and be involved with exocytosis. Heat-stress response may also involve Annexin-2.

## Storage

Storage:

Store at -20°C. Avoid exposure to light. Stable for one year after shipment.

Storage Buffer:

PBS with 50% Glycerol, 0.05% Proclin300, 0.5% BSA, pH 7.3.

Aliquoting is unnecessary for -20°C storage

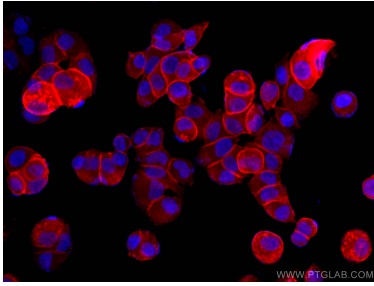
For technical support and original validation data for this product please contact:

T: 1 (888) 4PTGLAB (1-888-478-4522) (toll free in USA), or 1(312) 455-8498 (outside USA)

E: [proteintech@ptglab.com](mailto:proteintech@ptglab.com)  
W: [ptglab.com](http://ptglab.com)

This product is exclusively available under Proteintech Group brand and is not available to purchase from any other manufacturer.

## Selected Validation Data



Immunofluorescent analysis of (-20°C Ethanol)  
fixed T-47D cells using CoraLite® 594-conjugated  
Annexin A2 antibody (CL594-66035, Clone: 1C1E12  
) at dilution of 1:600.