

For Research Use Only

CoraLite®594-conjugated LONP1 Monoclonal antibody

Catalog Number: CL594-66043

Featured Product



Basic Information

Catalog Number:

CL594-66043

Size:

100ul , Concentration: 2000 ug/ml by Nanodrop;

Source:

Mouse

Isotype:

IgG1

Immunogen Catalog Number:

AG7306

GenBank Accession Number:

BC000235

GeneID (NCBI):

9361

UNIPROT ID:

P36776

Full Name:

lon peptidase 1, mitochondrial

Calculated MW:

106 kDa

Observed MW:

100 kDa

Purification Method:

Protein G purification

CloneNo.:

1C6C12

Recommended Dilutions:

IF/ICC 1:50-1:500

Excitation/Emission maxima wavelengths:

588 nm / 604 nm

Applications

Tested Applications:

IF/ICC

Species Specificity:

human, mouse, rat

Positive Controls:

IF/ICC : C6 cells,

Background Information

LONP1(Lon protease homolog, mitochondrial) is also named as LONP, LONHS, HLON, LON, PRSS15, PIM1, MGC1498 and belongs to the peptidase S16 family. It seems to play a major role in the elimination of oxidatively modified proteins in the mitochondrial matrix(PMID:18021745). LONP1, also a nuclearly encoded and mitochondrially located stress-responsive protease, is involved in heme-mediated ALAS-1 turnover(PMID:21659532). It recognizes specific surface determinants or folds, initiates proteolysis at solvent-accessible sites, and generates unfolded polypeptides that are then processively degraded(PMID:15870080).

Storage

Storage:

Store at -20°C. Avoid exposure to light. Stable for one year after shipment.

Storage Buffer:

PBS with 50% Glycerol, 0.05% Proclin300, 0.5% BSA, pH 7.3.

Aliquoting is unnecessary for -20°C storage

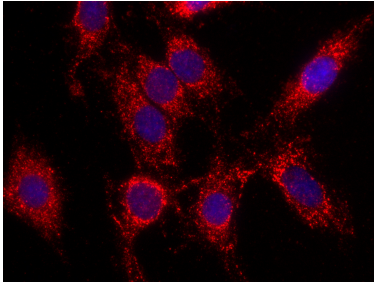
For technical support and original validation data for this product please contact:

T: 1 (888) 4PTGLAB (1-888-478-4522) (toll free in USA), or 1(312) 455-8498 (outside USA)

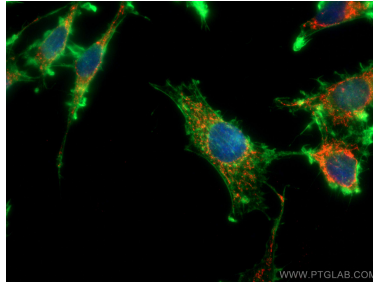
E: proteintech@ptglab.com
W: ptglab.com

This product is exclusively available under Proteintech Group brand and is not available to purchase from any other manufacturer.

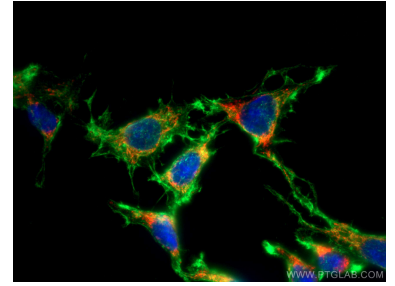
Selected Validation Data



Immunofluorescent analysis of (4% PFA) fixed C6 cells using Coralite®594 LONP1 antibody (CL594-66043, Clone: 1C6C12) at dilution of 1:100. DAPI (blue).



Immunofluorescent analysis of (4% PFA) fixed C6 cells using Coralite®594 LONP1 antibody (CL594-66043, Clone: 1C6C12) at dilution of 1:100, CL488-Phalloidin (green).



Immunofluorescent analysis of (-20°C Ethanol) fixed C6 cells using Coralite®594 LONP1 antibody (CL594-66043, Clone: 1C6C12) at dilution of 1:100, CL488-Phalloidin (green).