

For Research Use Only

CoraLite®594-conjugated RBM15 Monoclonal antibody

Catalog Number:CL594-66059

Featured Product



Basic Information

Catalog Number:

CL594-66059

Size:

100ul , Concentration: 1000 ug/ml by

Nanodrop;

Source:

Mouse

Isotype:

IgG2a

Immunogen Catalog Number:

AG17970

GenBank Accession Number:

BC006397

GeneID (NCBI):

64783

UNIPROT ID:

Q96T37

Full Name:

RNA binding motif protein 15

Calculated MW:

105 kDa

Observed MW:

107 kDa

Purification Method:

Protein A purification

CloneNo.:

4A1A4

Recommended Dilutions:

IF/ICC 1:50-1:500

Excitation/Emission maxima
wavelengths:

588 nm / 604 nm

Applications

Tested Applications:

IF/ICC, FC (Intra)

Species Specificity:

human

Positive Controls:

IF/ICC : HeLa cells,

Background Information

RNA-binding motif protein 15 (RBM15) belongs to the SPEN protein family, which have repressor function in several signaling pathway, and may bind to RNA through interaction with spliceosome components. It was first described as a 5' translocation partner of the MAL gene in t(1;22)(p13;q13) infant acute megakaryocytic leukemia, and it functions in murine hematopoiesis through modulating Notch-induced transcriptional activation, which play crucial roles in leukemogenesis. Decreasing RBM15 levels with RNA interference could inhibit the growth and proliferation, block the cell cycle, and induce apoptosis in CML cells.

Storage

Storage:

Store at -20°C. Avoid exposure to light. Stable for one year after shipment.

Storage Buffer:

PBS with 50% Glycerol, 0.05% Proclin300, 0.5% BSA, pH 7.3.

Aliquoting is unnecessary for -20°C storage

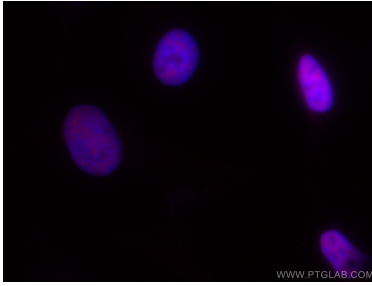
For technical support and original validation data for this product please contact:

T: 1 (888) 4PTGLAB (1-888-478-4522) (toll free
in USA), or 1(312) 455-8498 (outside USA)

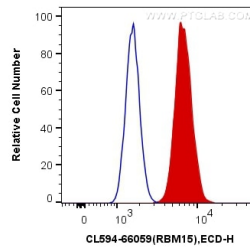
E: proteintech@ptglab.com
W: ptglab.com

This product is exclusively available under Proteintech Group brand and is not available to purchase from any other manufacturer.

Selected Validation Data



Immunofluorescent analysis of (4% PFA) fixed HeLa cells using CoraLite®594 RBM15 antibody (CL594-66059, Clone: 4A1A4) at dilution of 1:200.



1X10⁶ HeLa cells were intracellularly stained with 0.4 ug CoraLite®594 Anti-Human RBM15 (CL594-66059, Clone:4A1A4) (red), or 0.4 ug Mouse IgG2a Isotype Control (CL594-66360-2, Clone: K11A1B2A2) (blue). Cells were fixed and permeabilized with Transcription Factor Staining Buffer Kit (PF00011).