

CoraLite®594-conjugated NTF2 Monoclonal antibody

Catalog Number: **CL594-66063**

Basic Information

Catalog Number: CL594-66063	GenBank Accession Number: BC002348	Purification Method: Protein G purification
Size: 100ul , Concentration: 2000 µg/ml by Nanodrop;	GeneID (NCBI): 10204	CloneNo.: 4H7F9
Source: Mouse	UNIPROT ID: P61970	Recommended Dilutions: IF/ICC 1:50-1:500
Isotype: IgG1	Full Name: nuclear transport factor 2	Excitation/Emission maxima wavelengths: 588 nm / 604 nm
Immunogen Catalog Number: AG7879	Calculated MW: 14 kDa	
	Observed MW: 13 kDa	

Applications

Tested Applications: IF	Positive Controls: IF/ICC : HeLa cells,
Species Specificity: human	

Background Information

NUTF2 (nuclear transport factor 2), also named as NTF2, is a cytosolic protein responsible for nuclear import of Ran, a small Ras-like GTPase involved in a number of critical cellular processes, including cell cycle regulation, chromatin organization during mitosis, reformation of the nuclear envelope following mitosis, and controlling the directionality of nucleocytoplasmic transport. Nucleocytoplasmic translocation of NTF2 is regulated in mammalian cells, and may involve a tyrosine and/or threonine kinase-dependent signal transduction mechanism(s) (PMID: 22880006). The MW of this protein is 14 kDa, and this antibody specially recognises the 14 kDa protein.

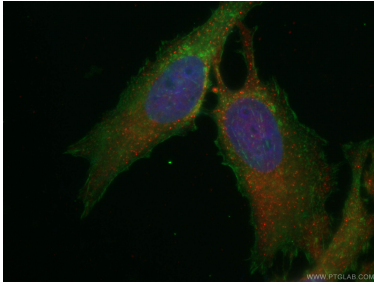
Storage

Storage:
Store at -20°C. Avoid exposure to light. Stable for one year after shipment.
Storage Buffer:
PBS with 50% Glycerol, 0.05% Proclin300, 0.5% BSA, pH 7.3.
Aliquoting is unnecessary for -20°C storage

For technical support and original validation data for this product please contact:
T: 1 (888) 4PTGLAB (1-888-478-4522) (toll free in USA), or 1(312) 455-8498 (outside USA)
E: proteintech@ptglab.com
W: ptglab.com

This product is exclusively available under Proteintech Group brand and is not available to purchase from any other manufacturer.

Selected Validation Data



Immunofluorescent analysis of (-20°C Ethanol) fixed HeLa cells using Coralite®594-conjugated NTF2 antibody (CL594-66063, Clone: 4H7F9) at dilution of 1:200, CL488-Phalloidin (green).