

For Research Use Only

CoraLite®594-conjugated CD31 Monoclonal antibody

Catalog Number: CL594-66065

1 Publications



Basic Information

Catalog Number:

CL594-66065

Size:

100ul , Concentration: 1000 ug/ml by

Nanodrop;

Source:

Mouse

Isotype:

IgG1

Immunogen Catalog Number:

AG1787

GenBank Accession Number:

BC022512

GeneID (NCBI):

5175

ENSEMBL Gene ID:

ENSG00000261371

UNIPROT ID:

P16284

Full Name:

platelet/endothelial cell adhesion molecule

Calculated MW:

83 kDa

Purification Method:

Protein A purification

CloneNo.:

3F8E2

Recommended Dilutions:

IF-P 1:50-1:500

Excitation/Emission maxima wavelengths:

588 nm / 604 nm

Applications

Tested Applications:

IF-P

Cited Applications:

WB

Species Specificity:

human

Cited Species:

human

Positive Controls:

IF-P : human tonsillitis tissue, human placenta tissue

Background Information

Platelet endothelial cell adhesion molecule-1 (PECAM-1, CD31) is a member of the immunoglobulin gene superfamily of cell adhesion molecules. CD31 is a transmembrane glycoprotein that is highly expressed on the surface of the endothelium, making up a large portion of its intracellular junctions. PECAM-1 is also present on the surface of hematopoietic cells and immune cells including platelets, monocytes, neutrophils, natural killer cells, megakaryocytes and some types of T-cell (PMID: 9011572). As well as its role in cell-cell adhesion, PECAM-1 functions as a signaling receptor, and is involved in important physiological events such as nitric oxide production, regulation of T-cell immunity and tolerance, leukocyte transendothelial migration and inflammation and angiogenesis (PMID: 21183735; 20978210; 17872453; 20634489). This antibody is conjugated with CL594, Ex/Em 593 nm/614 nm.

Notable Publications

Author	Pubmed ID	Journal	Application
Zilong Zhang	38232736	Cell Metab	WB

Storage

Storage:

Store at -20°C. Avoid exposure to light. Stable for one year after shipment.

Storage Buffer:

PBS with 50% Glycerol, 0.05% Proclin300, 0.5% BSA, pH 7.3.

Aliquoting is unnecessary for -20°C storage

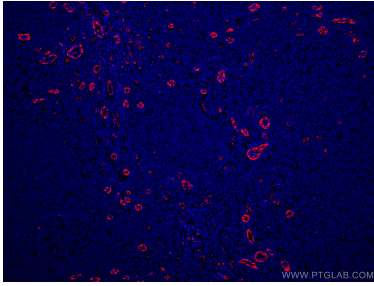
For technical support and original validation data for this product please contact:

T: 1 (888) 4PTGLAB (1-888-478-4522) (toll free in USA), or 1(312) 455-8498 (outside USA)

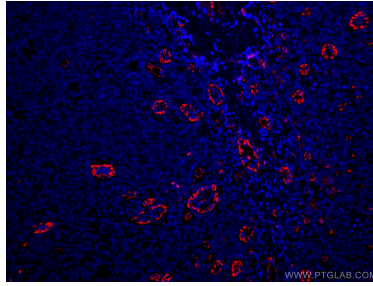
E: proteintech@ptglab.com
W: ptglab.com

This product is exclusively available under Proteintech Group brand and is not available to purchase from any other manufacturer.

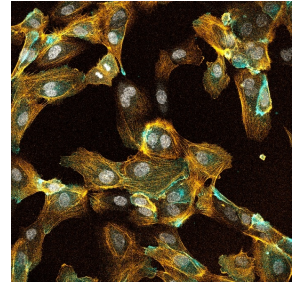
Selected Validation Data



Immunofluorescent analysis of (4% PFA) fixed human tonsillitis tissue using CoraLite®594 CD31 antibody (CL594-66065, Clone: 2A1E2) at dilution of 1:200.



Immunofluorescent analysis of (4% PFA) fixed human tonsillitis tissue using CoraLite®594 CD31 antibody (CL594-66065, Clone: 2A1E2) at dilution of 1:200.



Immunofluorescent analysis of fixed human umbilical cord endothelial cells using CoraLite 594 CD31 antibody (CL594-66065, in teal) and Phalloidin (in orange). DAPI in gray. Image credit: Shuntaro Yamada, PhD,