

For Research Use Only



# CoraLite®594-conjugated Serum amyloid P component Monoclonal antibody

Catalog Number:CL594-66084

## Basic Information

<b>Catalog Number:</b> CL594-66084	<b>GenBank Accession Number:</b> BC007058	<b>Purification Method:</b> Protein A purification
<b>Size:</b> 100ul , Concentration: 1000 ug/ml by Nanodrop;	<b>GeneID (NCBI):</b> 325	<b>CloneNo.:</b> 1A1D10
<b>Source:</b> Mouse	<b>UNIPROT ID:</b> P02743	<b>Recommended Dilutions:</b> IF-P 1:50-1:500
<b>Isotype:</b> IgG2b	<b>Full Name:</b> amyloid P component, serum	<b>Excitation/Emission maxima wavelengths:</b> 588 nm / 604 nm
<b>Immunogen Catalog Number:</b> AG14957	<b>Calculated MW:</b> 223 aa, 25 kDa	
	<b>Observed MW:</b> 27 kDa	

## Applications

<b>Tested Applications:</b> IF-P	<b>Positive Controls:</b> IF-P : human liver cancer tissue, human liver tissue, mouse spleen tissue
<b>Species Specificity:</b> human, mouse	

## Background Information

Serum amyloid P component (SAP), a member of pentraxin family, is a constitutive serum protein that is synthesized by hepatocytes. It is an acute phase protein, structurally related to C-reactive protein. SAP is a calcium-dependent ligand binding protein, which can interact with DNA and histones and may scavenge nuclear material released from damaged circulating cells.

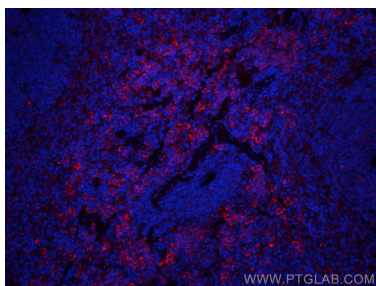
## Storage

**Storage:**  
Store at -20°C. Avoid exposure to light. Stable for one year after shipment.  
**Storage Buffer:**  
PBS with 50% Glycerol, 0.05% Proclin300, 0.5% BSA, pH 7.3.  
**Aliquoting is unnecessary for -20°C storage**

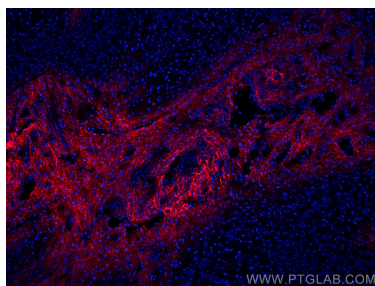
For technical support and original validation data for this product please contact:  
T: 1 (888) 4PTGLAB (1-888-478-4522) (toll free in USA), or 1(312) 455-8498 (outside USA)  
E: [proteintech@ptglab.com](mailto:proteintech@ptglab.com)  
W: [ptglab.com](http://ptglab.com)

This product is exclusively available under Proteintech Group brand and is not available to purchase from any other manufacturer.

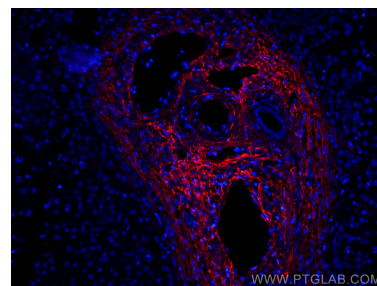
## Selected Validation Data



Immunofluorescent analysis of (4% PFA) fixed paraffin-embedded mouse spleen tissue using CoraLite®594 Serum amyloid P component antibody (CL594-66084, Clone: 1A1D10 ) at dilution of 1:200. Heat mediated antigen retrieval with Tris-EDTA buffer (pH 9.0).



Immunofluorescent analysis of (4% PFA) fixed human liver cancer tissue using CoraLite®594 Serum amyloid P component antibody (CL594-66084, Clone: 1A1D10 ) at dilution of 1:200.



Immunofluorescent analysis of (4% PFA) fixed human liver cancer tissue using CoraLite®594 Serum amyloid P component antibody (CL594-66084, Clone: 1A1D10 ) at dilution of 1:200.